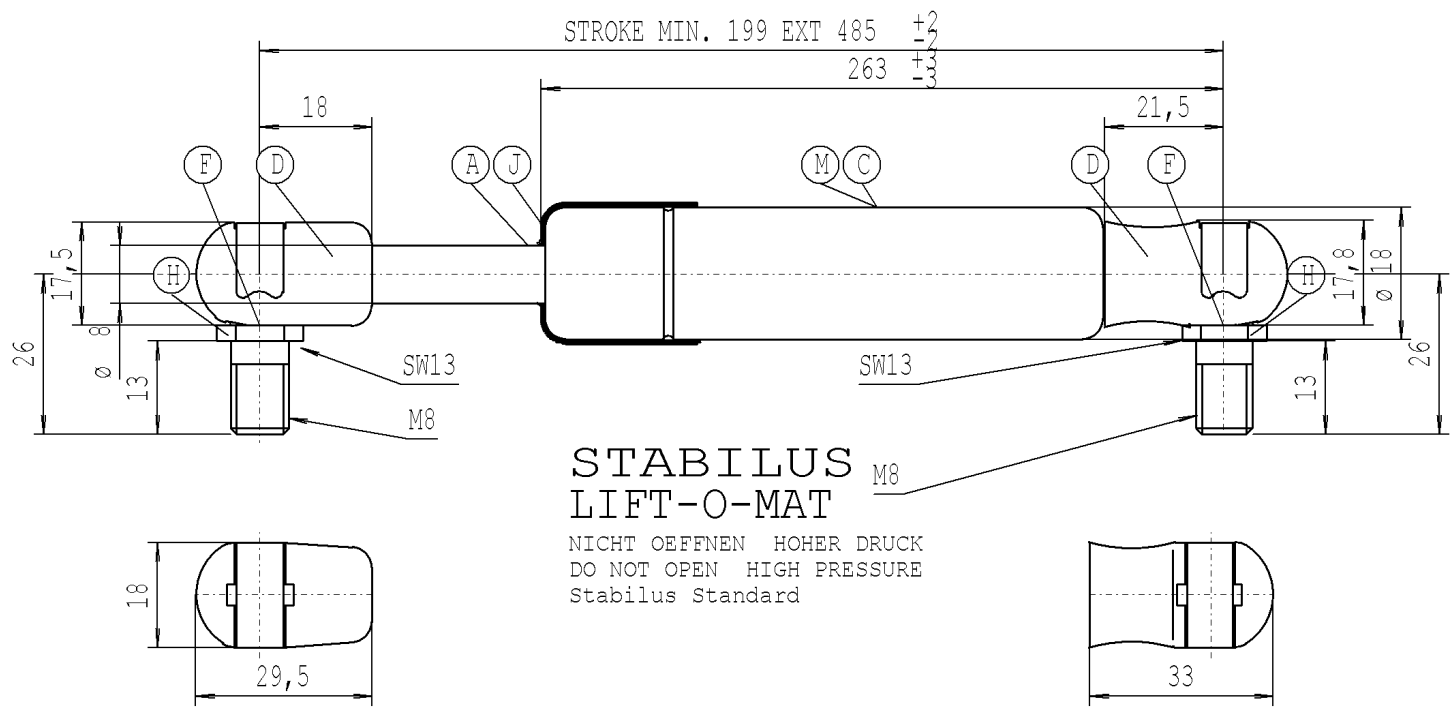


Intended for internal use and customer



**STABILUS  
LIFT-O-MAT**

NICHT OEFFNEN HOHER DRUCK  
DO NOT OPEN HIGH PRESSURE  
Stabilus Standard

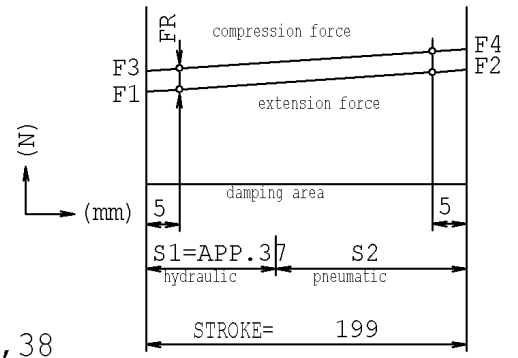
We reserve all rights to this drawing, to any patents or patent registrations related hereto, and to the duplication, retransmission by third parties and misc. use. Any use of this drawing is not permitted without the written consent of STABILUS.

- The warning label must not be removed or obscured.
- The gas spring must not be mechanically modified or damaged.
- Extension speed VS2=0,15-0,4 (m/s)

- compression and extension forces measured acc. to STAB-Spec. 10009033
- Extension speed measured according to STAB-Spec. 10005451
- Spring test with piston rod downwards

- Line up connections permissible deviation ± 5 DEG
- Protect piston rod from dirt, paint and damage
- Disposal acc. to STAB-Spec.10009375
- Drawing not true-to-scale
- Observe installation instructions according to STAB-Spec. 10005593
- Structural member test gas spring acc. STAB-Spec. 10010035
- Ball socket to suit ball stud DIN 71803 ø10
- Disassemble ball-socket to STAB-Spec.10006399
- Installation: With piston rod down to ensure best possible durability performanc of the gas spring.

-Permissible operating temperature range -30°C to +80°C



$$X = F2 / F1 = 1,38$$

$$FR_{max} = F3 - F1$$

- A Nislide black
- C print white
- D Releasing torque min. 3.0 Nm
- F greased
- H black passivated
- J border flange oiled
- M black painted

Unregistered Copy

Print-out is not subject to the modification service

STABILUS

CHANGE	NEW
	OLD
	CHG. NO.
	NAME
	NO.

Modifications in favour of technical process reserved

<b>DRAWING</b>		<b>CHECKED</b>	
DATE	18.01.2013	NAME	M.Gosman
Document No. 10200477		<b>831732</b>	<b>E</b>

Forces (statically measured)		
F1 (N)	F4 max (N)	FR max (N)
extension force	compression force	friction
150±15	290	45

DIMENSIONS WITH-OUT TOLERANCE

**LIFT-O-MAT**

+/-1      03 01 0816 10 199