

# **Vehicle Tub Sealing Kit for Ford Ranger 2011+**

**Part # SLVS01 / 10055870**

**Instruction # 37800001 (1 of 2) / 10055872**

# Vehicle Tub Sealing Kit for Ford Ranger 2011+

Part # SLVS01 / 10055870

---

**READ INSTRUCTIONS CAREFULLY BEFORE COMMENCING THIS ACTIVITY.**

## General Notes

To aid in installation the correct order of accessory installation needs to be observed:

- 1. Install all electrical components first.**
- 2. Install Vehicle Tub Sealing Kit.**
- 3. Install vehicle tub protective products such as tub liners\*.**
- 4. Install styling bar onto Sportlid.**
- 5. Install the Sportlid Fitting Kit.**
- 6. Install the Sportlid.**
- 7. Install any additional accessories such as roof racks.**

*\*Sportlid is compatible with under rail and Sport Guard style tub liners. Some trimming may be required.*

*OEM liner compatibility cannot be guaranteed. Please contact your dealer for more information.*

- Read through the fitting instructions before installation of accessory.
- Always install the accessory following the fitting instructions. Failure to do so may cause damage to the vehicle or the accessory and void the warranty.
- Ensure all recyclable discarded vehicle/accessory components and packaging are disposed following local recycling regulations.
- It is always recommended that this accessory is fitted by a qualified Technician.
- Safely store and protect any removed vehicle components.
- Ensure all bare metal surfaces are protected using Automotive Bare Metal Primer and touch-up paint.
- Remove all metal swarf and dust from all vehicle surfaces if surface is used for accessory installation.
- Ensure all fasteners are torqued to the specifications as per instruction.
- Apply any adhesives to the vehicle only when the surface temperature is between 20°C to 40°C.
- Recommended all smooth lids are painted. Failure to paint lid will void the warranty.

# Vehicle Tub Sealing Kit for Ford Ranger 2011+

Part # SLVS01 / 10055870

---

**READ INSTRUCTIONS CAREFULLY BEFORE COMMENCING THIS ACTIVITY.**

## General Vehicle and Accessory Warranty Notes and Cautions

- For correct installation and proper operation of the vehicle and accessory we recommend this accessory is fitted by a qualified Technician.
- During the accessory fitment ensure all automotive safety practices and regulations are followed.
- Do not modify the vehicle in any way other than specified in these Accessory Fitting Instructions as this may void the warranty.

## Safety Notes

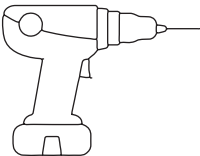
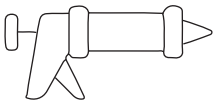
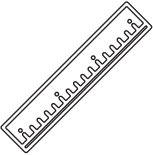
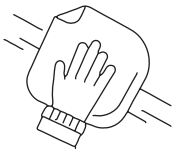

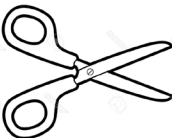
- Check that all work practises comply with safety standards.
- It is advisable to seek assistance from another person when lifting heavy components.
- While using power tools ensure safe procedures are followed.
- Appropriate clothing & PPE must be worn.



# Vehicle Tub Sealing Kit for Ford Ranger 2011+

Part # SLVS01 / 10055870

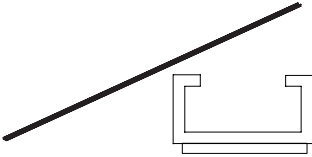
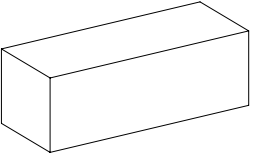
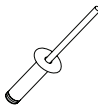


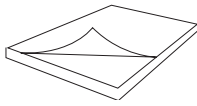
**READ INSTRUCTIONS CAREFULLY BEFORE COMMENCING THIS ACTIVITY.**

Tools Required					
No.	Description	Image	No.	Description	Image
1	Power drill & 5mm drill bit		2	Clear non-acetic silicone	
3	Metric ruler		4	Cleaning rags	
5	Rivet Gun		6	Scissors	

# Vehicle Tub Sealing Kit for Ford Ranger 2011+

Part # SLVS01 / 10055870

READ INSTRUCTIONS CAREFULLY BEFORE COMMENCING THIS ACTIVITY.

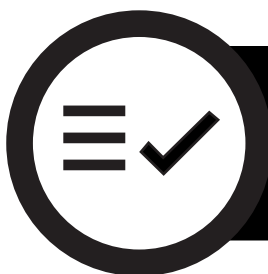
Kit Contents- Hardware				
No.	Item Description	Quantity	Image	Part Number
1	Ford Sealing Channel (1505mm)	1		10055912
2	Foam tub sealing block	1 set		10055099
3	Pop rivets 4X18MM	4		10053982
4	3M Surface Primer	2		10051996
5	Alcohol wipes	2		10051664
6	90X190mm Vinyl sticker	1		10055097

# Vehicle Tub Sealing Kit for Ford Ranger 2011+

Part # SLVS01 / 10055870

---

**READ INSTRUCTIONS CAREFULLY BEFORE COMMENCING THIS ACTIVITY.**



**Check that the contents of the Fitting Kit are complete and undamaged.**



**If any contents of the Fitting Kit are found incomplete or damaged they must be replaced using the specified accessory components.**

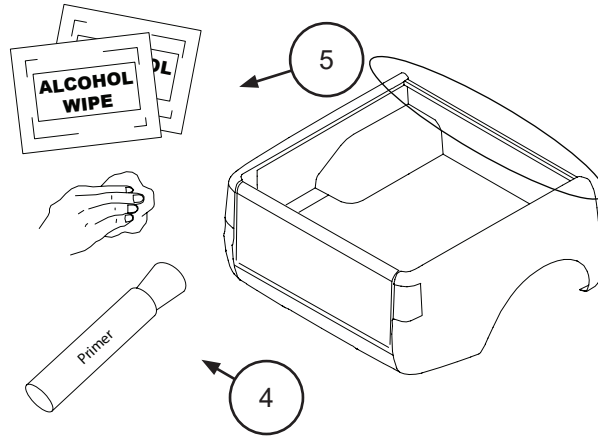
# Vehicle Tub Sealing Kit for Ford Ranger 2011+

Part # SLVS01 / 10055870

READ INSTRUCTIONS CAREFULLY BEFORE COMMENCING THIS ACTIVITY.

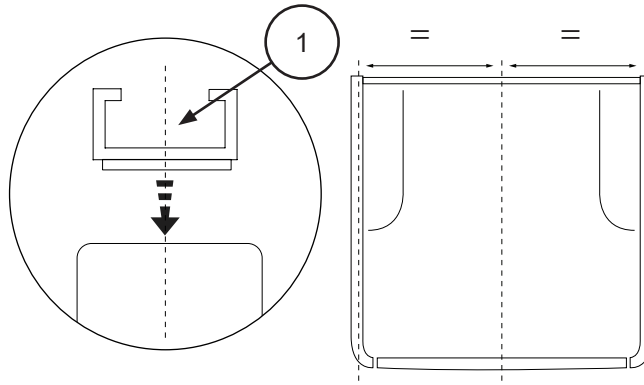
## Step 1

- Thoroughly clean the front rail surface using alcohol (5).
- Prepare surface with primer (4).



## Step 2

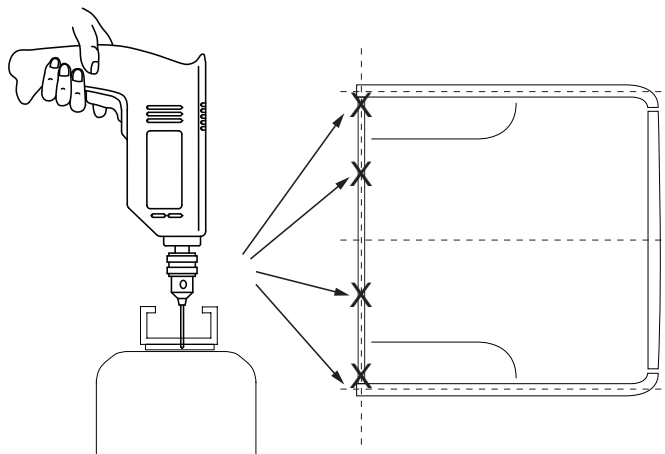
- Align the sealing channel (1) centrally along the front rail.
- Install the sealing channel (1).
- Apply downward pressure along the length of the sealing channel.



## Step 3

**!!! OPTIONAL !!!**  
**Drilling into the panel work of certain vehicles may void vehicle panel warranty.**

- Drill & rivet (3) item (1) into position.



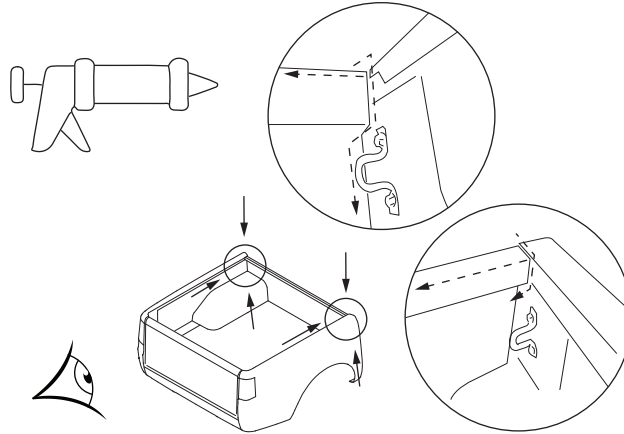
# Vehicle Tub Sealing Kit for Ford Ranger 2011+

Part # SLVS01 / 10055870

**READ INSTRUCTIONS CAREFULLY BEFORE COMMENCING THIS ACTIVITY.**

## Step 4

- Carefully examine the front corners of the vehicle deck. Take note of any gaps or voids where water ingress may occur.
- Using non-acetic silicone seal gaps & voids.
- Clean all surfaces of unwanted silicone.

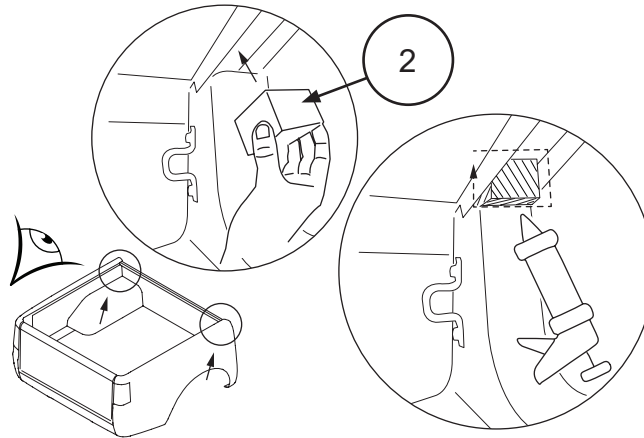


## Step 5

**NOTE 1:** If installing premium version ensure wiring loom has been installed before undertaking this step.

**NOTE 2:** If a tub liner is installed it is recommended removing before commencing this step.

- Install under rail foam sealing blocks (2)
- Once blocks are firmly seated, seal around the edges using generous amounts of non-acetic silicone.





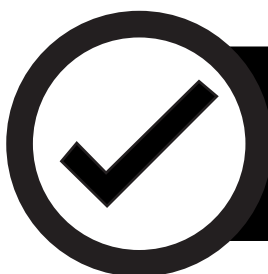
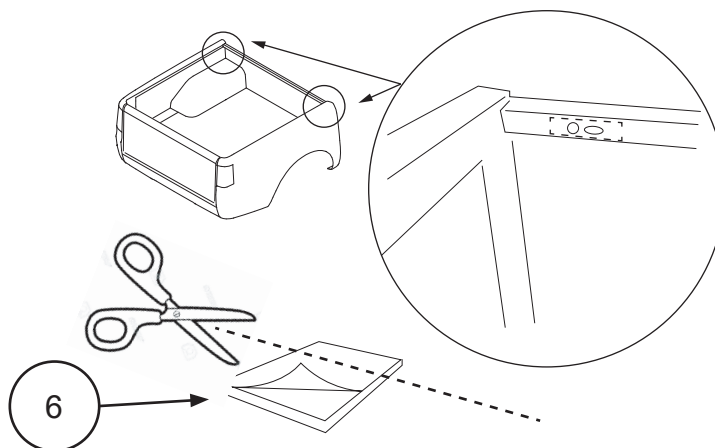
# Vehicle Tub Sealing Kit for Ford Ranger 2011+

Part # SLVS01 / 10055870

**READ INSTRUCTIONS CAREFULLY BEFORE COMMENCING THIS ACTIVITY.**

## Step 6

- Trim two 90X25mm strips from the vinyl sticker (6)
- Cover the factory holes in the LHS and RHS front corners.



**Installation complete. Please place these fitting instructions inside the owners manual wallet.**