

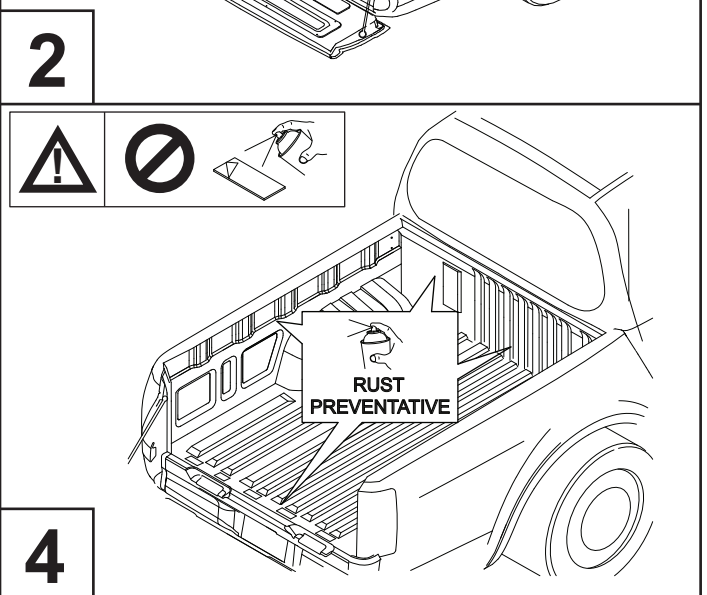
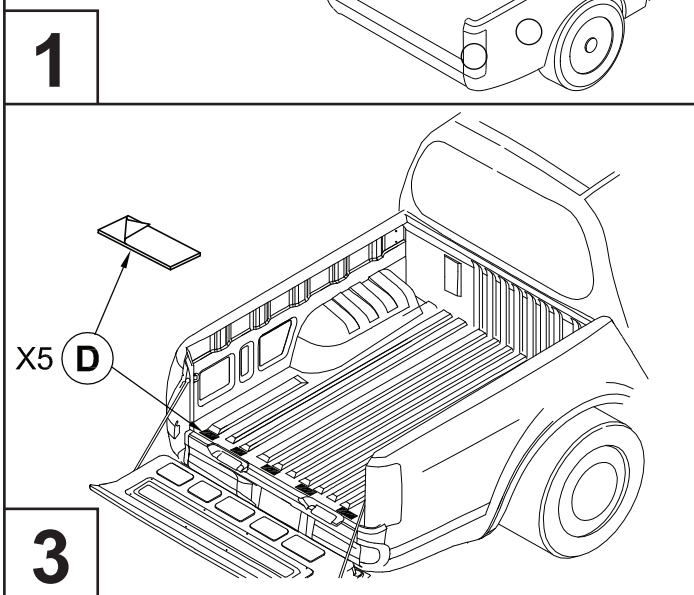
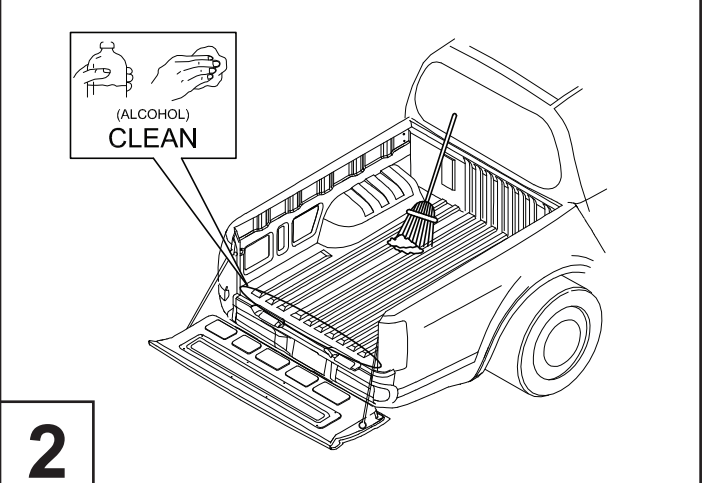
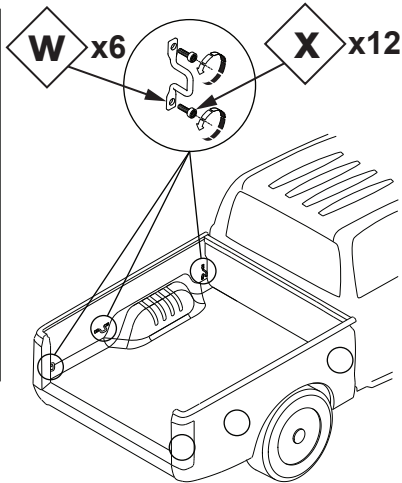
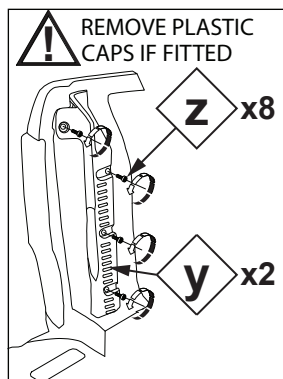


INSTALLATION INSTRUCTIONS (K601)

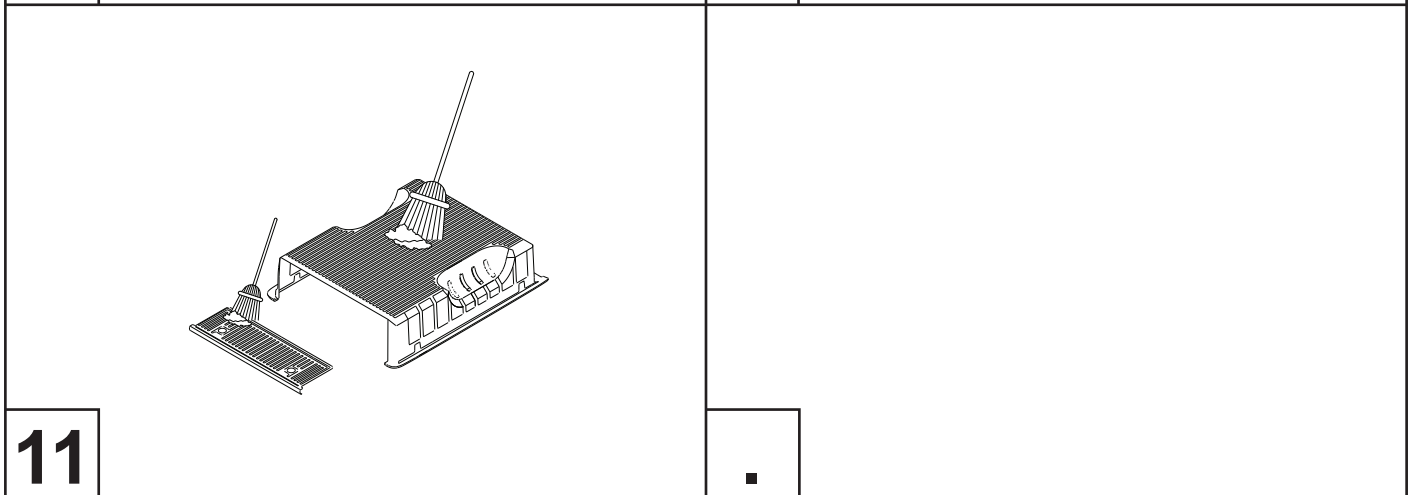
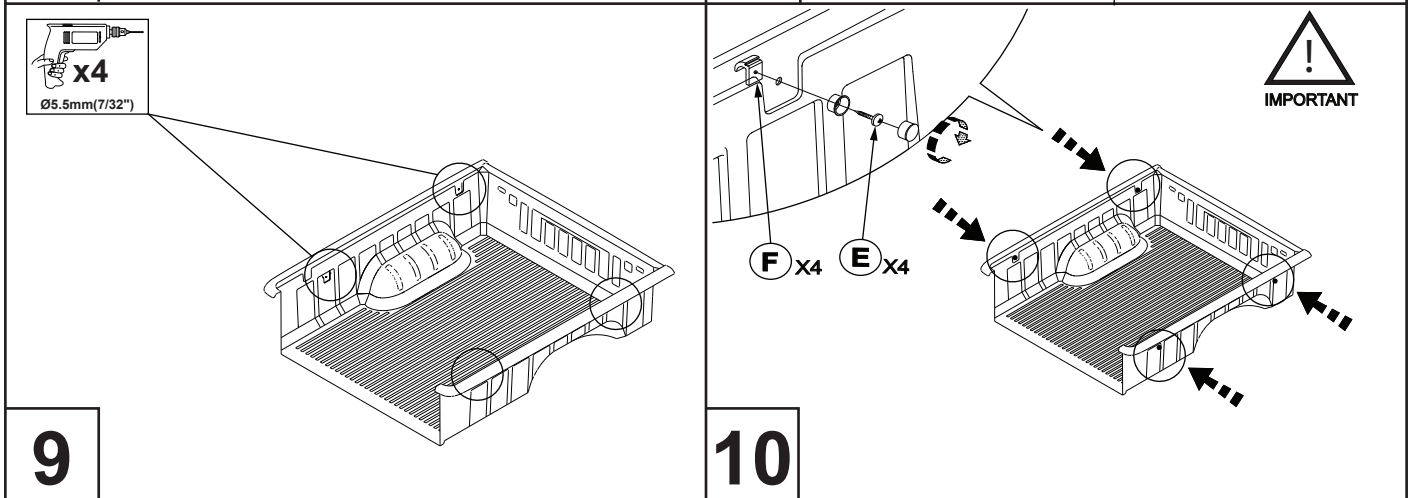
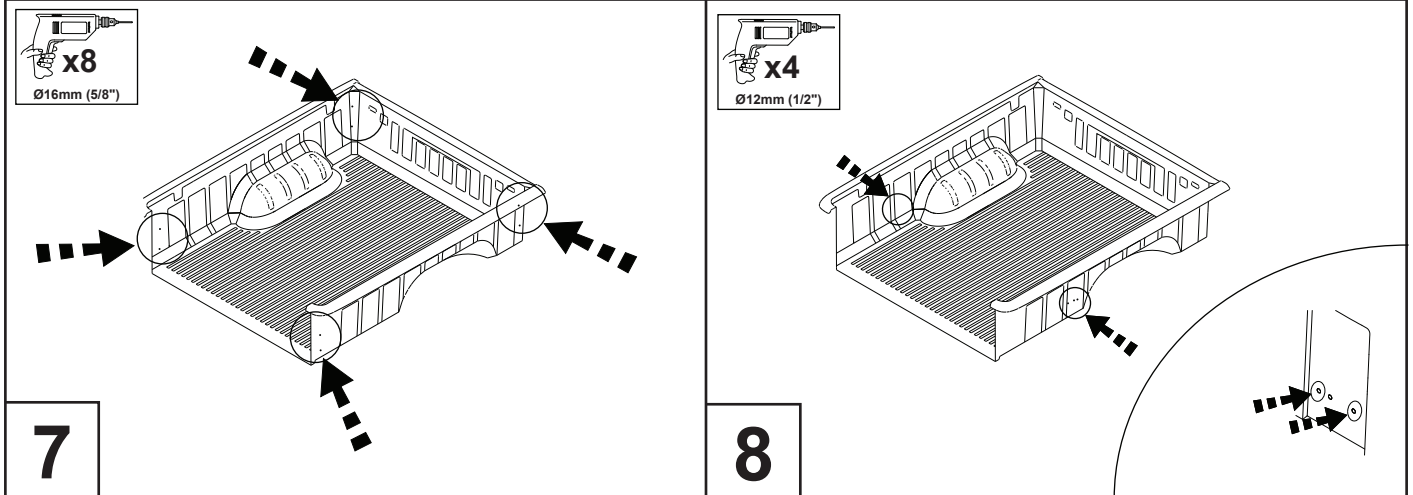
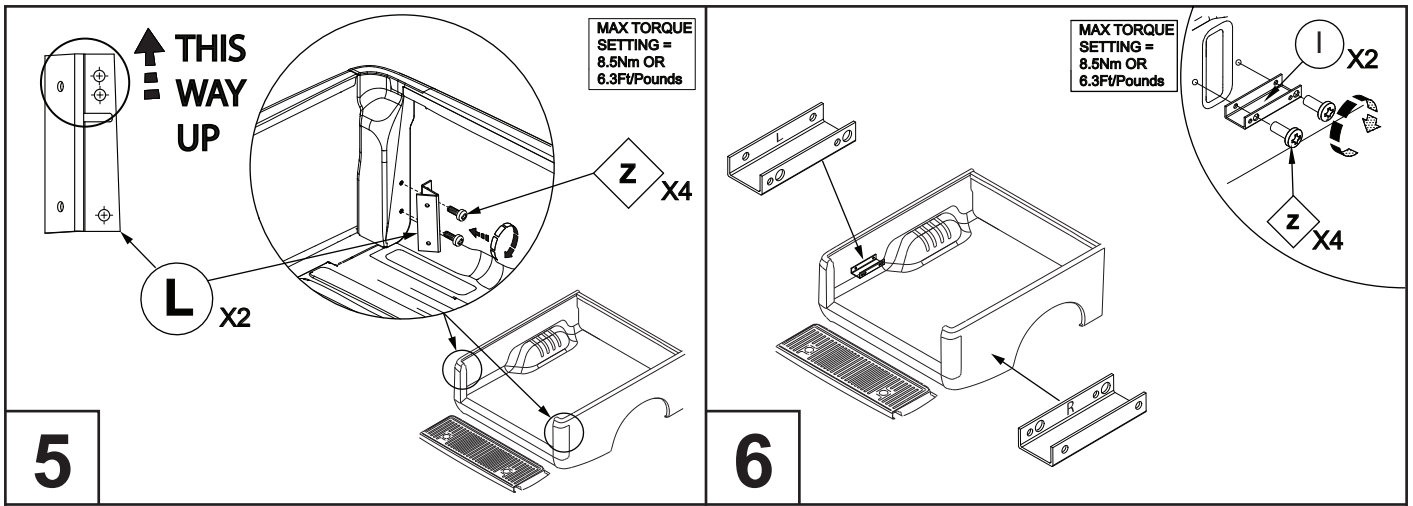
Over Rail Liner

Ford-Ranger T6-2011-Extra Cab

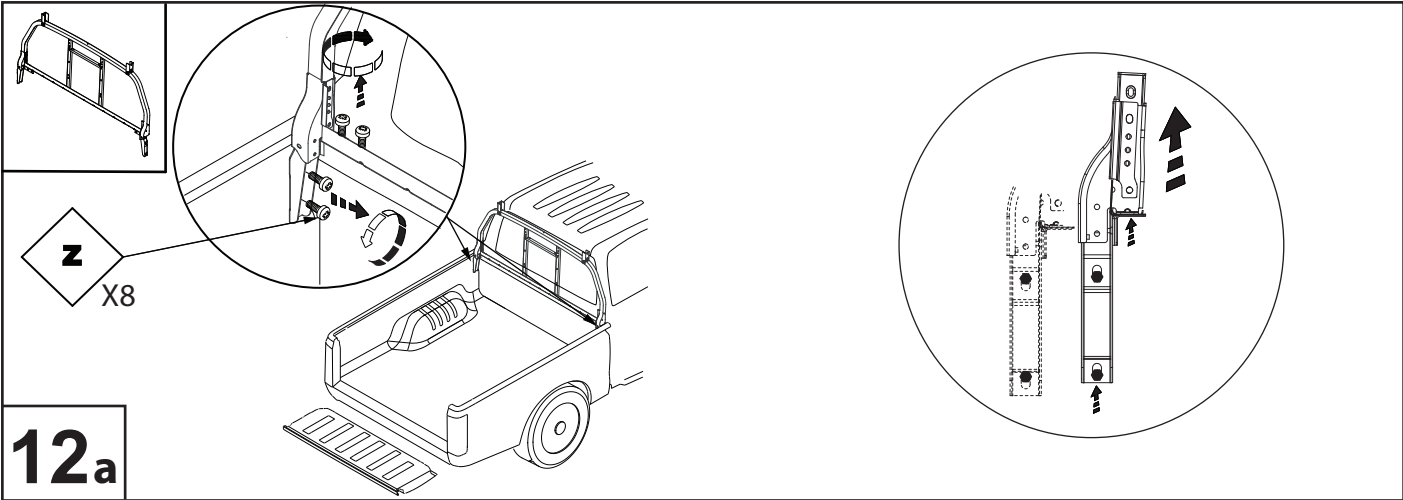
A X1	B X1	C X6	D X11	
E 10x3/4" X4	F X4	G M8x0.8 X4	H M8x20mm X12	I X2 (1L + 1R)
J 8x16x8mm X4	K M8x22x3mm X4	L X4 (2L + 2R)		



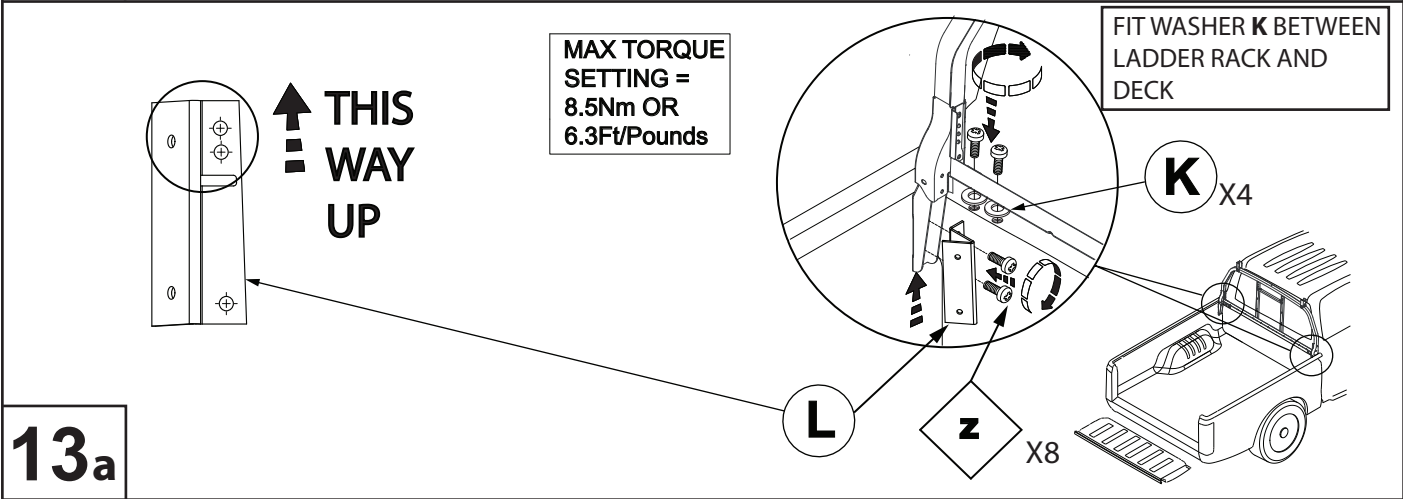
Fitting Kit Number	Manufacturer	Model Type	Year	Stockist	Cab Size	Product	Revision	Date	Page
K601	Ford	Ranger	2011	General Use	XC	OR Liner	1	11/03/14	1 of 4



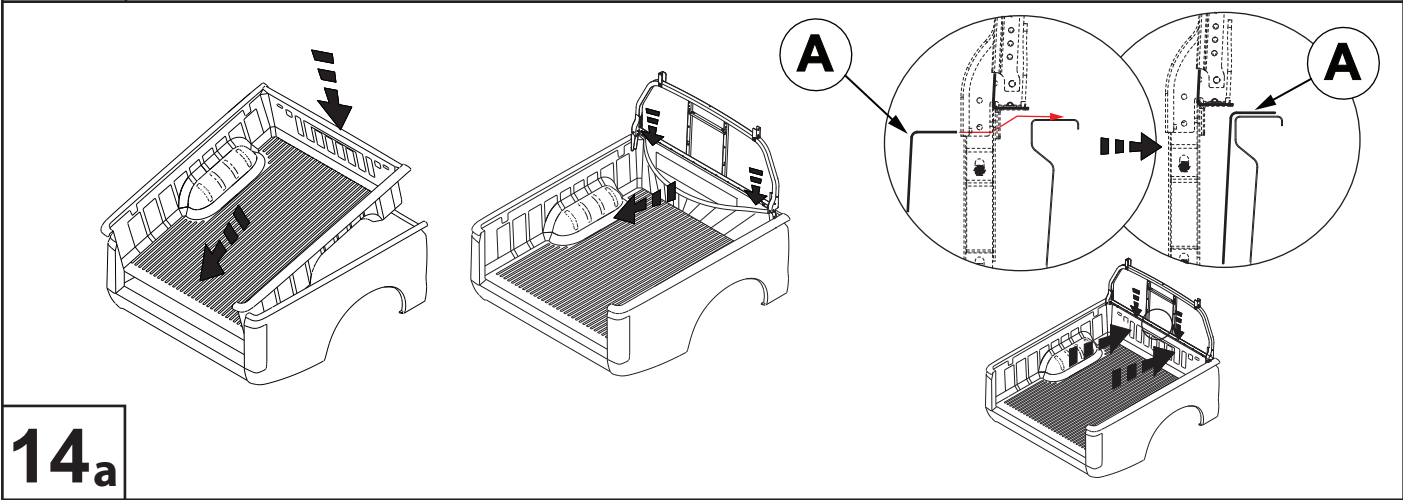
Fitting Kit Number	Manufacturer	Model Type	Year	Stockist	Cab Size	Product	Revision	Date	Page
K601	Ford	Ranger	2011	General Use	XC	OR Liner	1	11/03/14	2 of 4



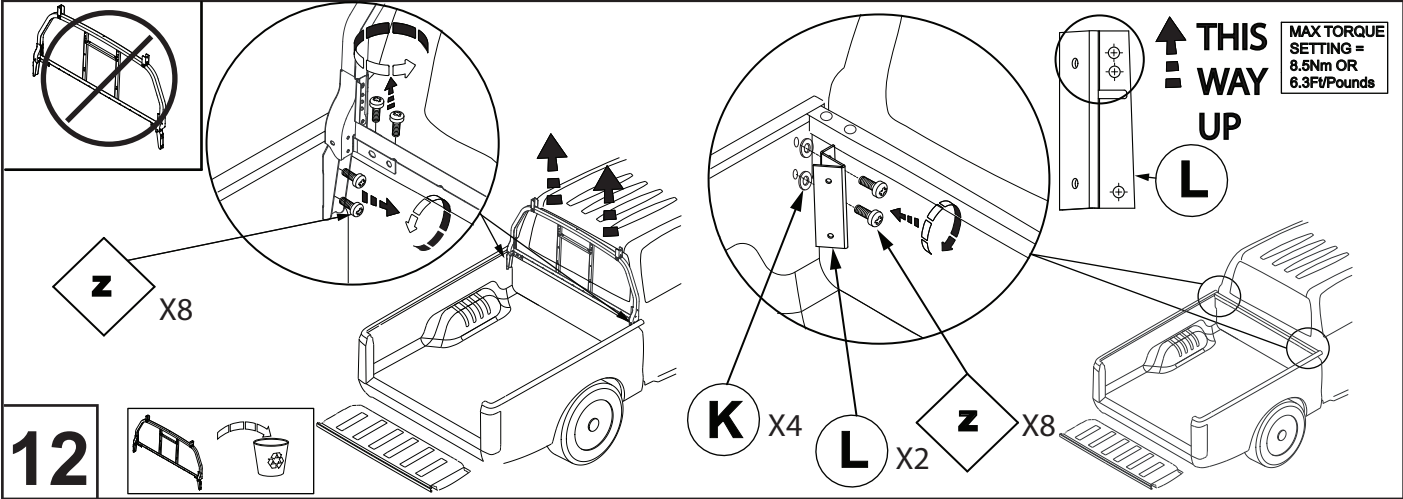
12a



13a

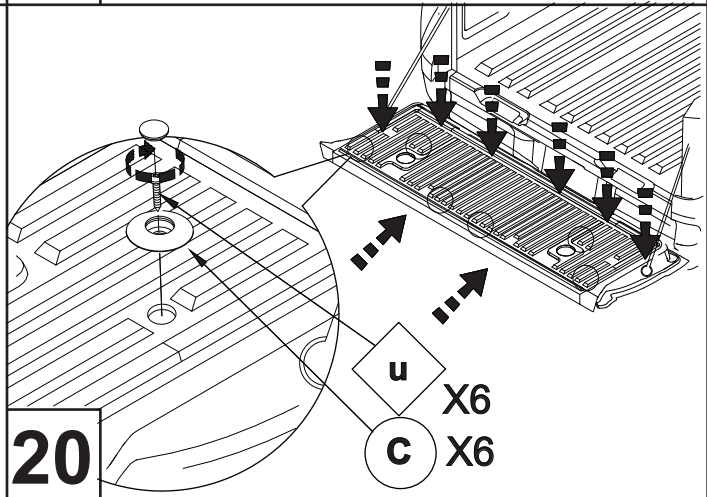
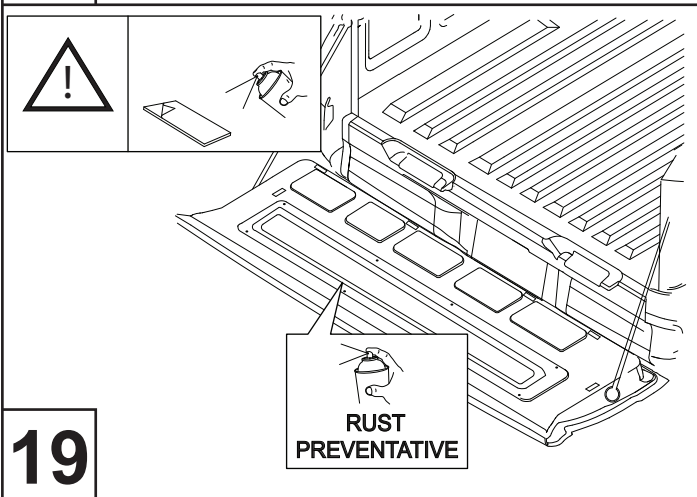
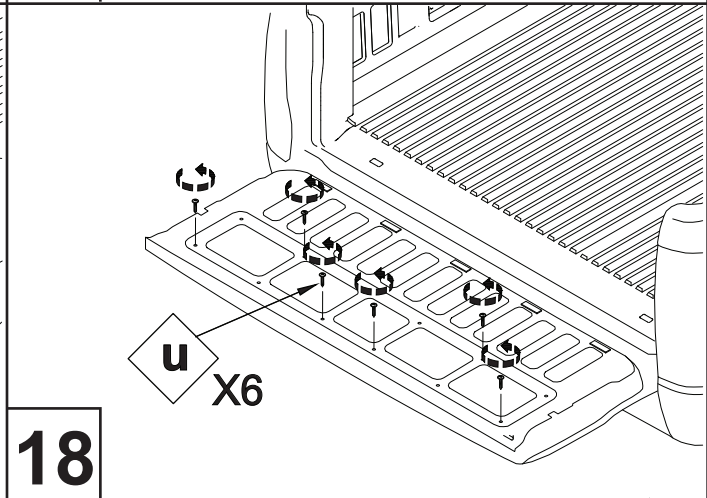
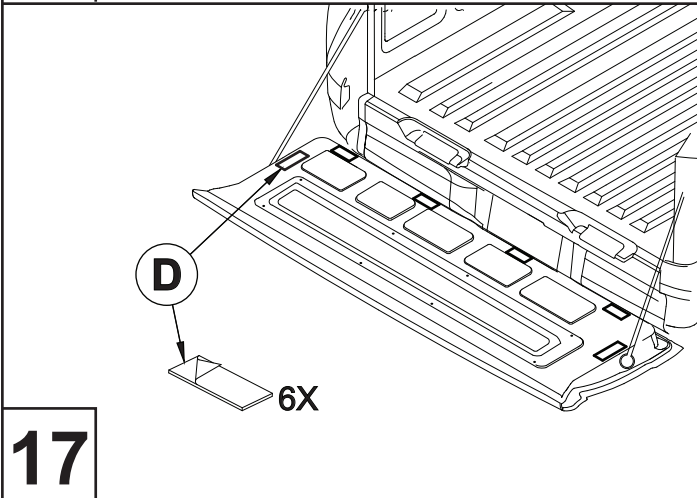
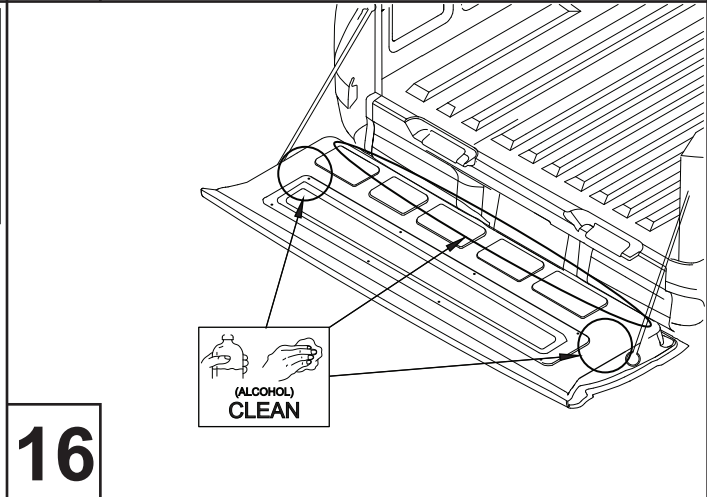
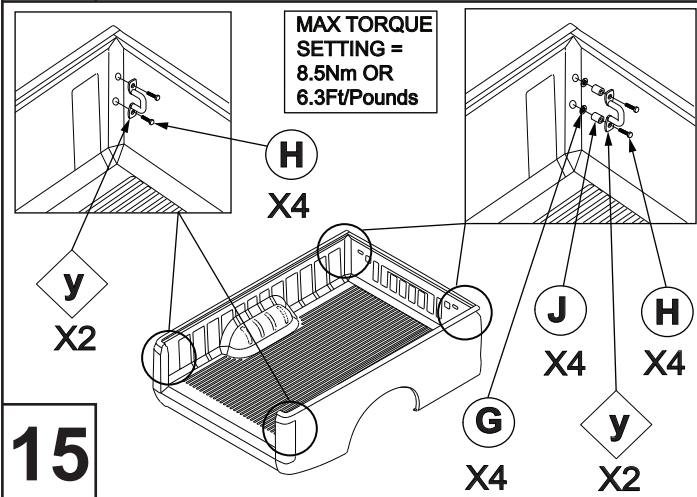
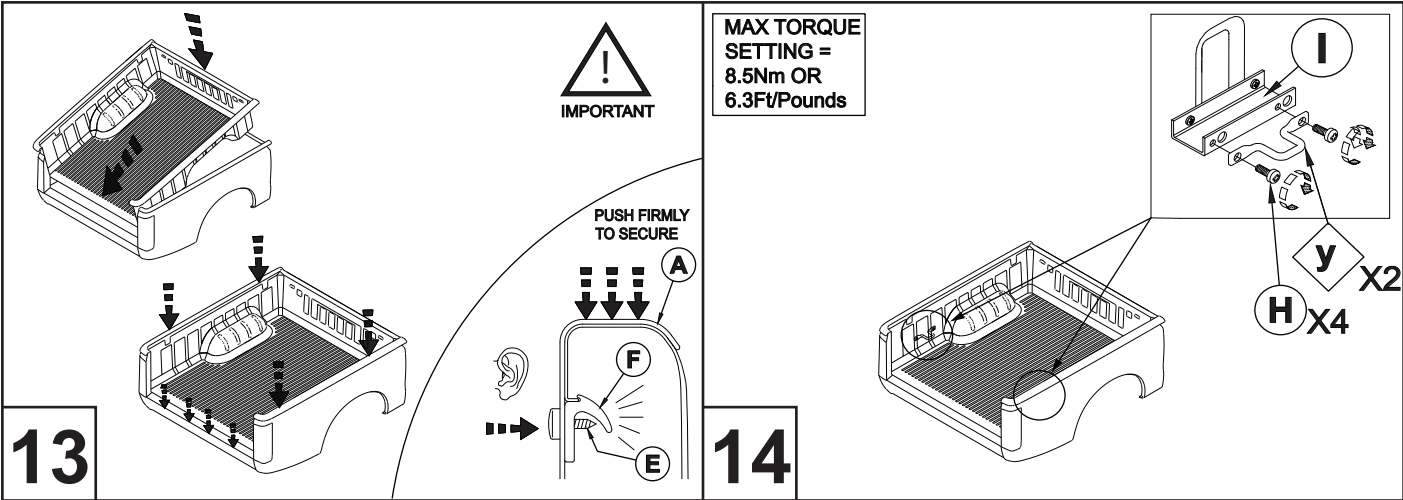


14a



12

Fitting Kit Number	Manufacturer	Model Type	Year	Stockist	Cab Size	Product	Revision	Date	Page
K601	Ford	Ranger	2011	General Use	XC	OR Liner	1	11/03/14	3 of 4



Fitting Kit Number	Manufacturer	Model Type	Year	Stockist	Cab Size	Product	Revision	Date	Page
K601	Ford	Ranger	2011	General ues	XC	OR Liner	1	11/03/14	4 of 4