

**17W  
4319**

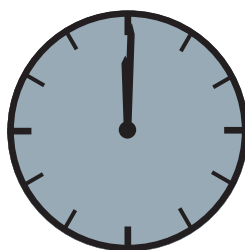
**Mitsubishi L200 DC, Md. 2015 KJ0T**

Roll bar 60  
Überrollbügel 60  
Arceau 60



# **ASSEMBLY INSTRUCTION**

Montageanleitung • Instructions de montage

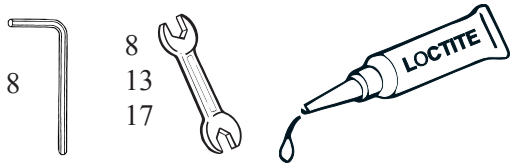


**60 Minuten**

**Artikel-Nr:**  
17W4319  
17W5319 black steel

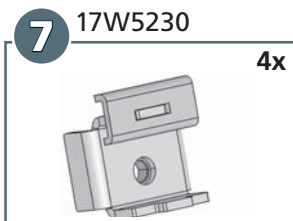
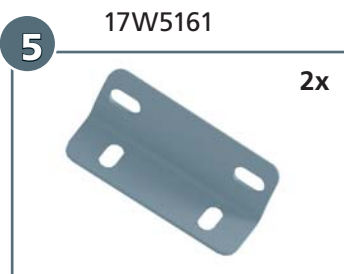
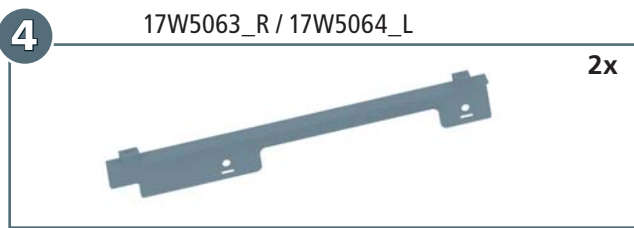
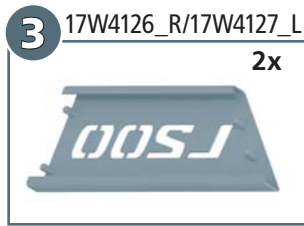
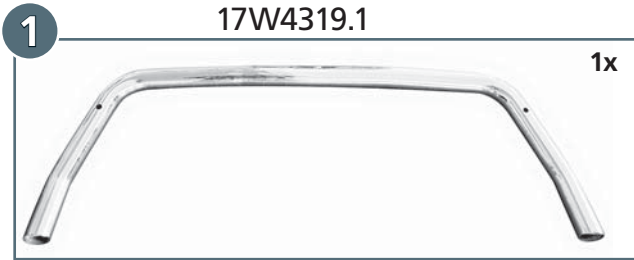
**Revision 4: 13.06.2016**

  
[www.antec-online.de](http://www.antec-online.de)



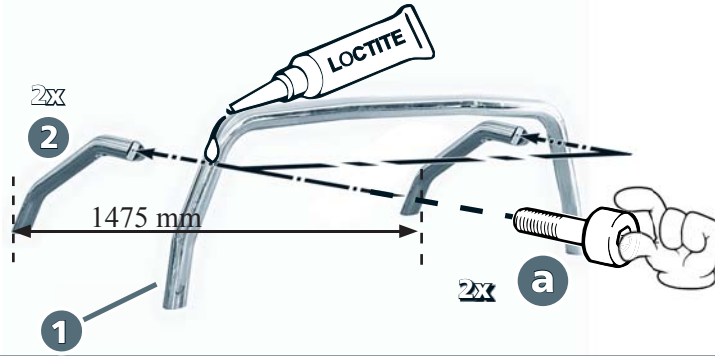
M5(A2): 5,1 Nm  
M8(A2): 21,4Nm  
M10(A2): 44Nm  
M10: 50 Nm

M5: 2Nm

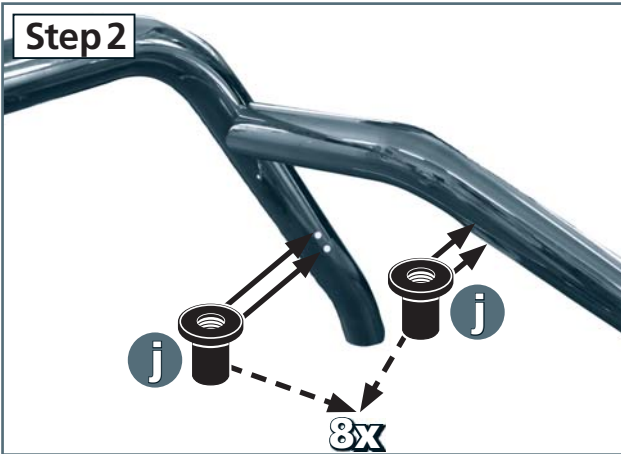


<b>a</b>		M10x30; DIN 912 A2	2x
<b>b</b>		M5x20(25); DIN 933 A2	8x
<b>c</b>		M8x30; DIN 933 A2	4x
<b>d</b>		M10x40; DIN 933 Zn	4x
<b>e</b>		M5; DIN 985 A2	8x
<b>f</b>		Ø8; DIN 127 A2	4x
<b>g</b>		ø5,3; DIN 125 A2	16x
<b>h</b>		ø8,4; DIN 125 A2	4x
<b>i</b>		ø10,5; DIN 125 Zn	4x
<b>j</b>		Getowell M5	8x
<b>k</b>		SW8	16x
<b>l</b>		SW17	4x

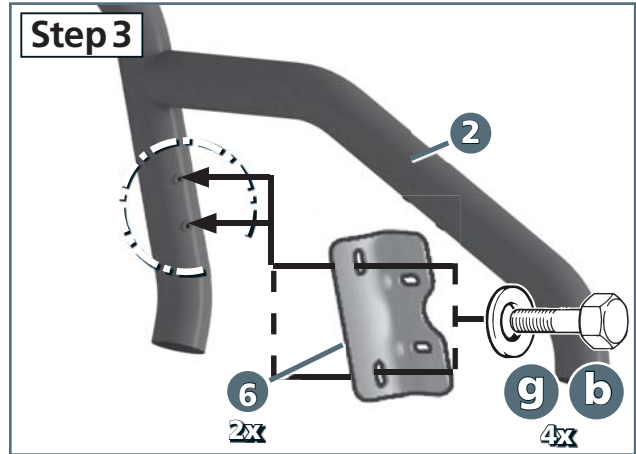
### Step 1



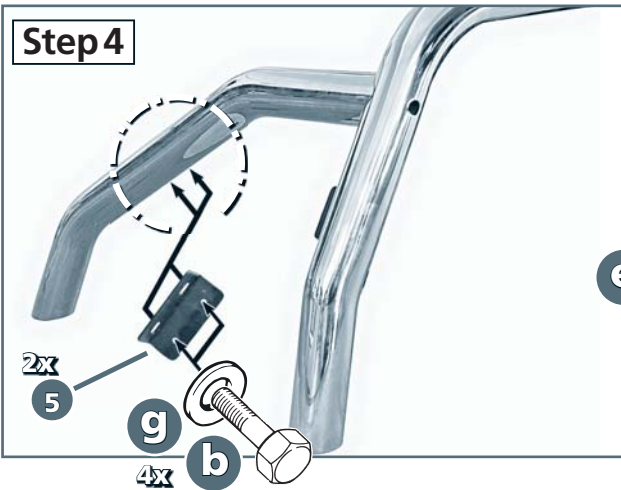
### Step 2



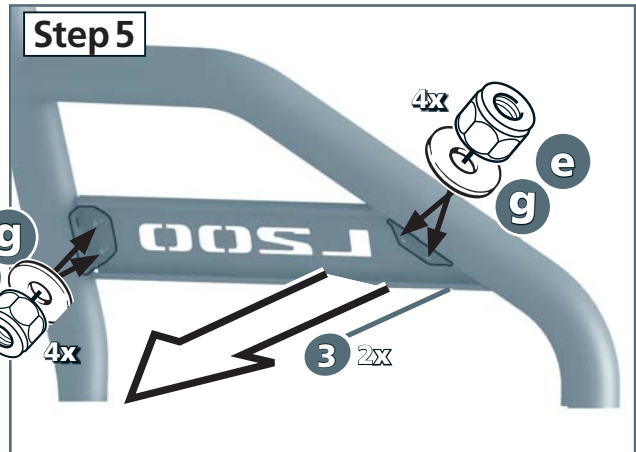
### Step 3



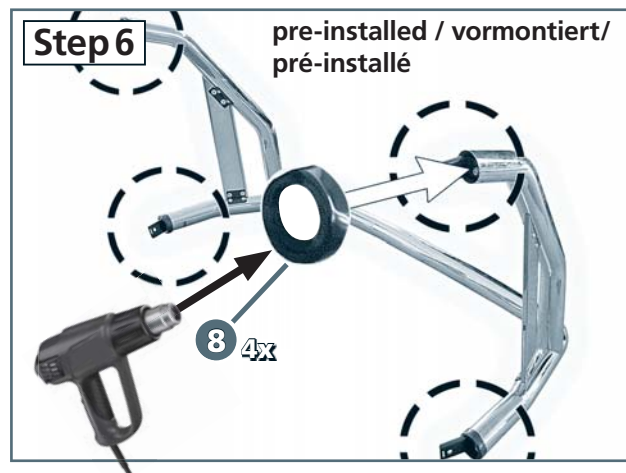
### Step 4

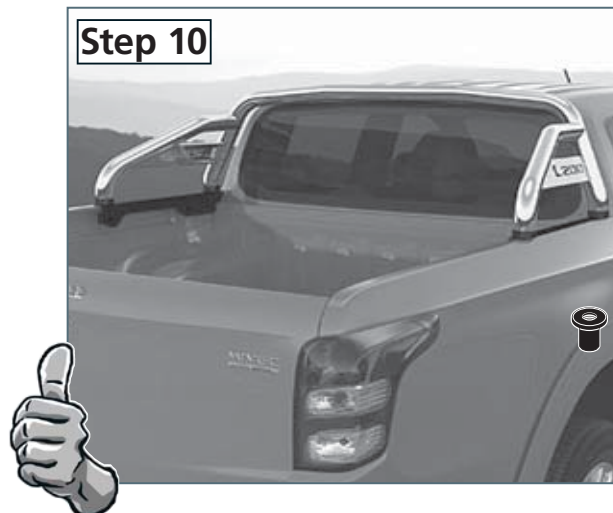
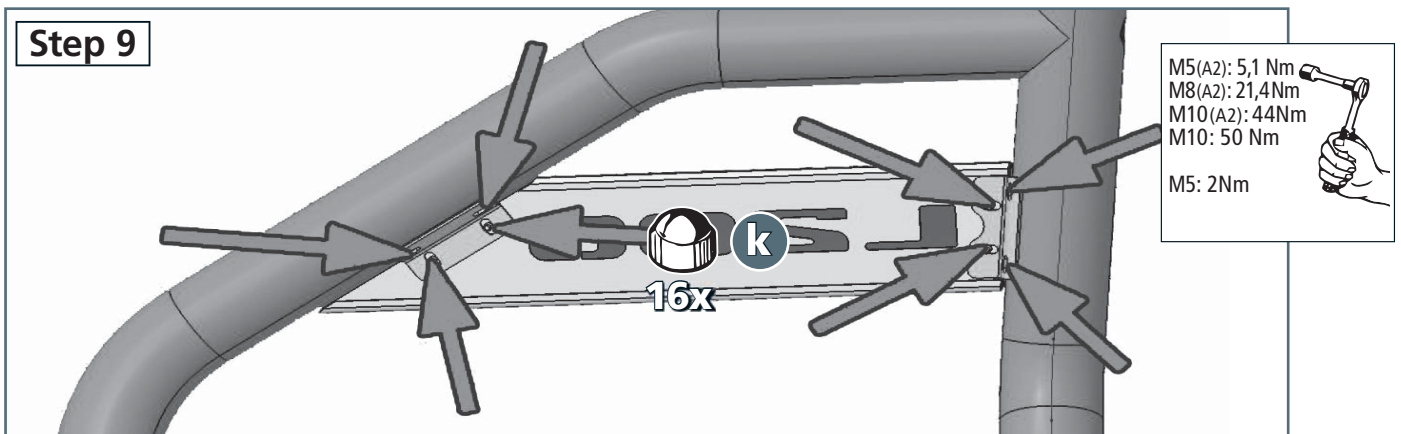
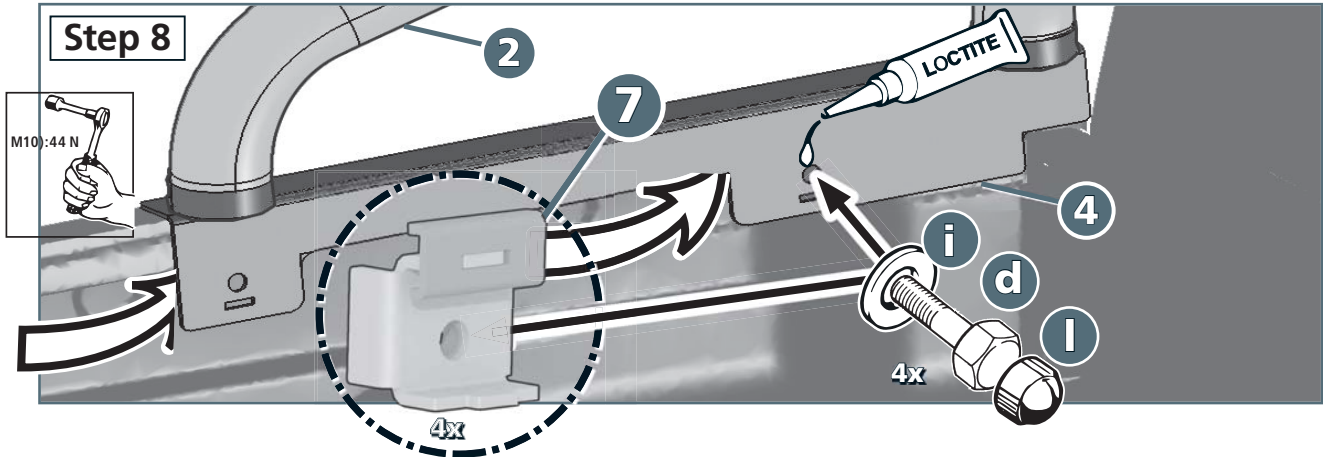
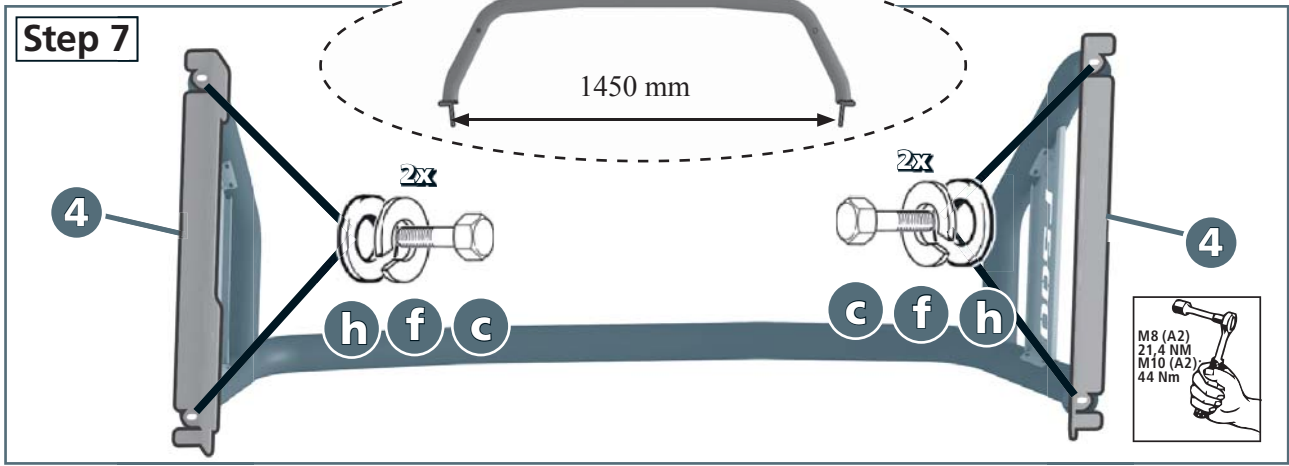


### Step 5



### Step 6





Revision 4: 13.06.2016