

15V 4214

Ford Ranger; Md. 2012

EU-Underride guard plate with two pipes 42 mm

EU-Unterfahrerschutzblech mit zwei Rohren 42 mm

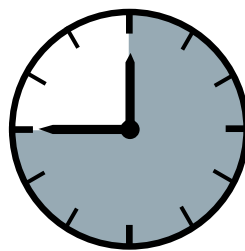
Plaque de protection anti-encastrement avec l'UE et de deux tuyaux 42 mm



*Compatible with Automatic Cruise Control /Forward Collision Mitigation
Kompatibel mit Abstandsregeltempomat /Auffahrvermeidungs-oder warnsystem
compatible avec radar de régulation de distance/ freinage autonome d'urgence

ASSEMBLY INSTRUCTION

Montageanleitung • Instructions de montage



45 Minuten

Product-No.:

15V 4214 Stainless Steel

15V 5214 black Steel

15V 9214 Assembly-kit

Revision 2: 10.03.2016

15V 4214

Ford Ranger; Md. 2012

EU-Underride guard plate with two pipes 42 mm

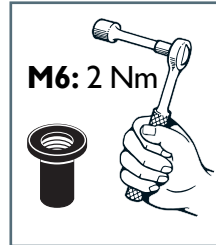
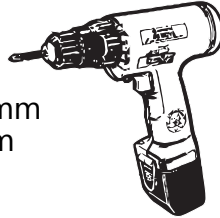
EU-Unterfahrungsblech mit zwei Rohren 42 mm

Plaque de protection anti-encastrement avec l'UE et de deux tuyaux 42 mm

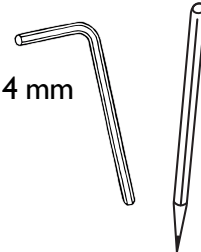
Required tools / Benötigte Werkzeuge / Outillage requis



Ø: 12,5mm
Ø: 9 mm






SW: 4 mm



Parts list/Teileliste/Lista de accesorios

1 15V4214.1 / 15V5214.1



a		M6 x 50, ähnl. ISO 7380 Zn	4x
b		ø 6,4 PA6.6 Natur	4x
c		GETO-WELL M6	2x

15V9214

2 13B5047 **2x** **3** 15V8021 **4x**



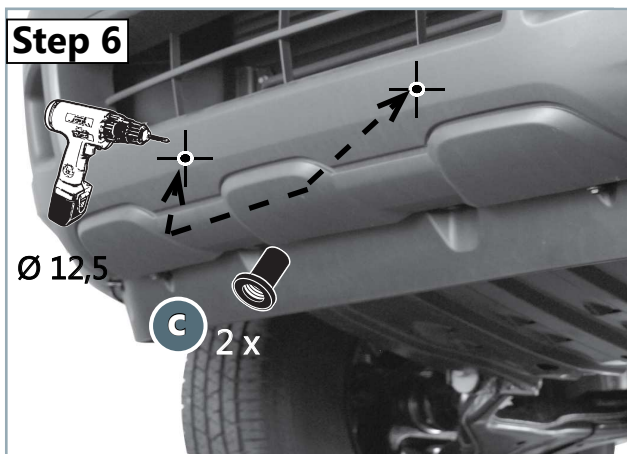
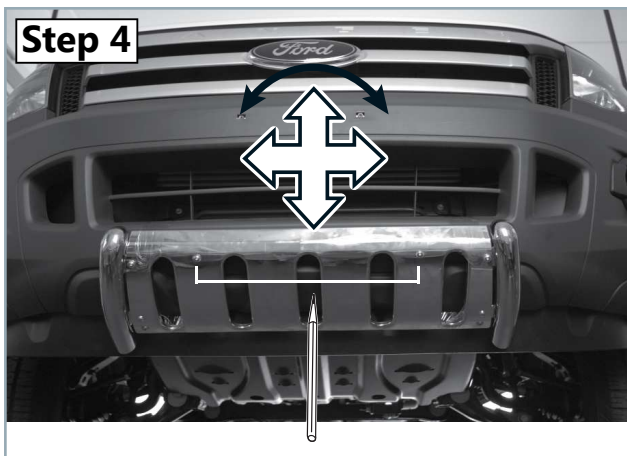
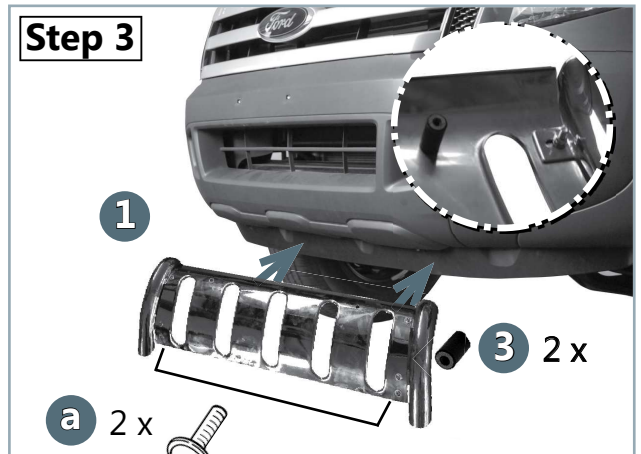
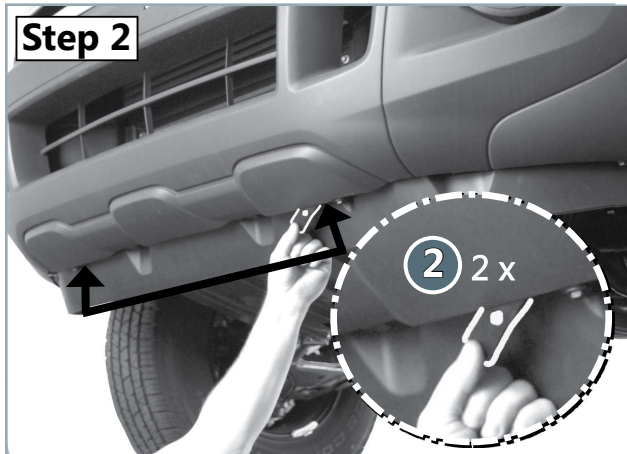
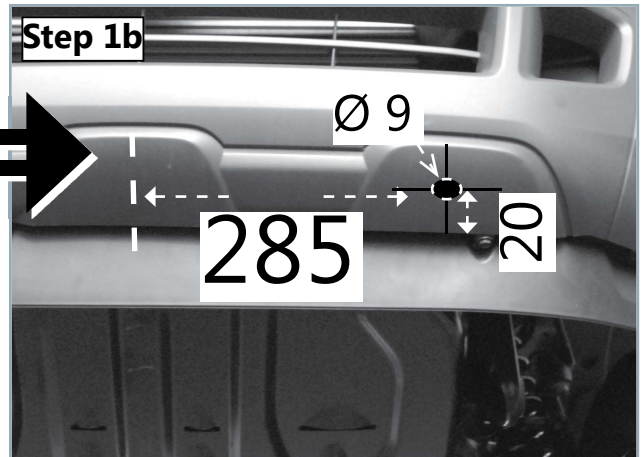
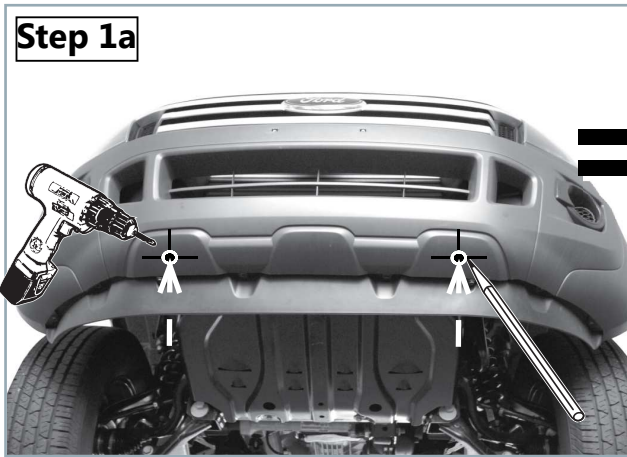
Product-No.:

15V 4214 Stainless Steel

15V 5214 Black Steel

15V 9214 Assembly-kit

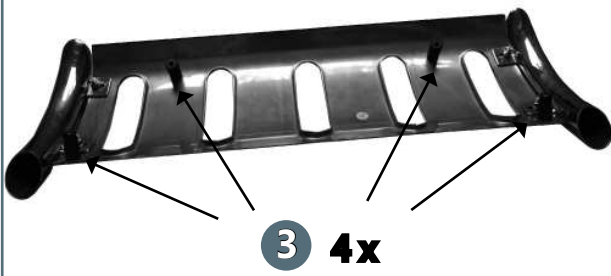
Revision 2: 10.03.2016



product-number:
15V 4214 Stainless Steel

Revision 2: 10.03.2016

Step 7b



Step 8



M6: 10 Nm

M6: 2 Nm

