

CUSTOM CROSSBARS

INSTRUCTIONS

Step 1

Step 2: A, B, C

Step 3: A, B, C

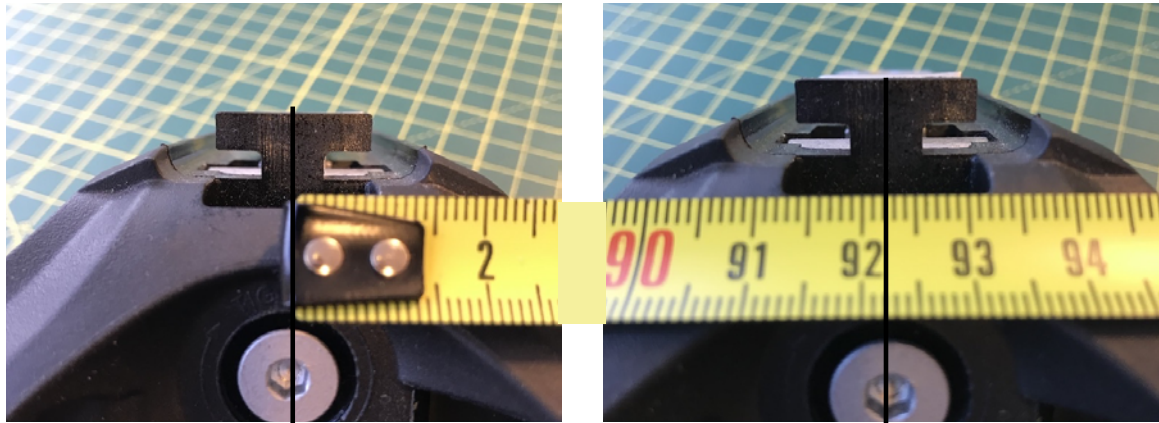
Step 4: A, B, C

Step 5

Step 1

MEASURE

Attach the Clamp to the roof of the car in question and measure from center to centre of the top of the clamp.

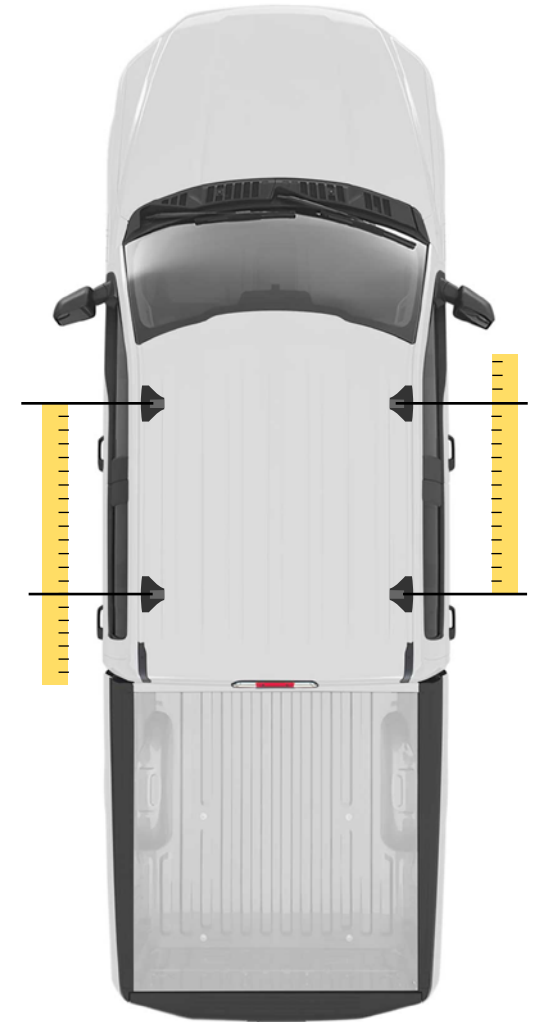


(Example FPD is 922 mm)

FPD = (Fixed point distance) in millimeters

Measure on the driver side, and on the passenger side of the car.

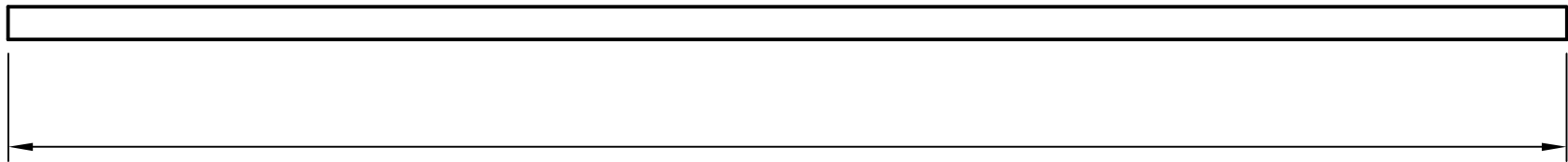
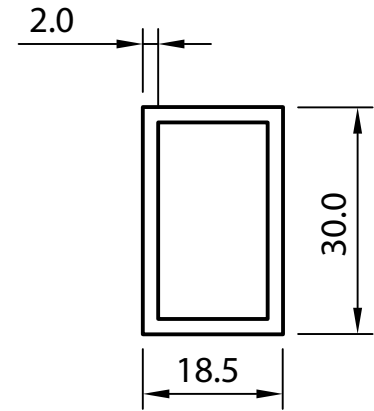
Some attachment points and clmps have tolerances and can be moved a bit. Try to find the position were the clamp attaches best.



Step 2A - Crossbar Front

CUT

Deburr and break sharp cut edges and corners of the profile.



$FPD + 33.0$ mm

USE JIG

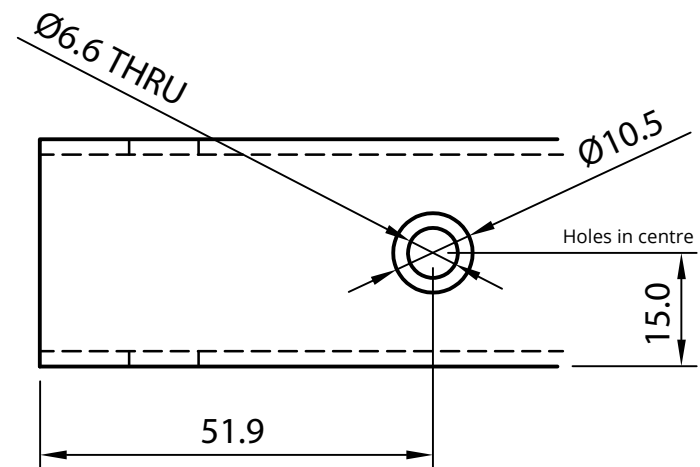
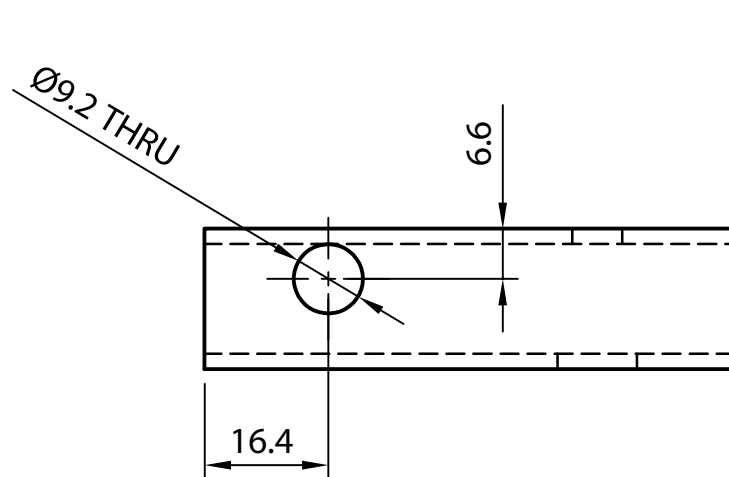
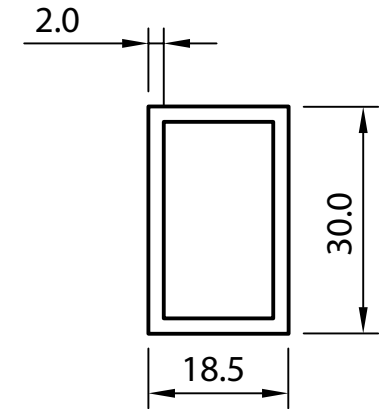
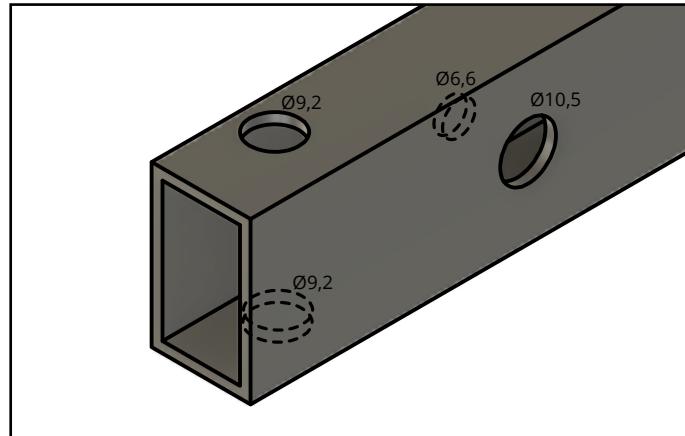
A description of how to make a cutting jig can be found at the end of this document

Step 2B - Crossbar Front

DRILL

Drill all the way through the profile. Notice different sizes for the holes

Deburr sharp edges

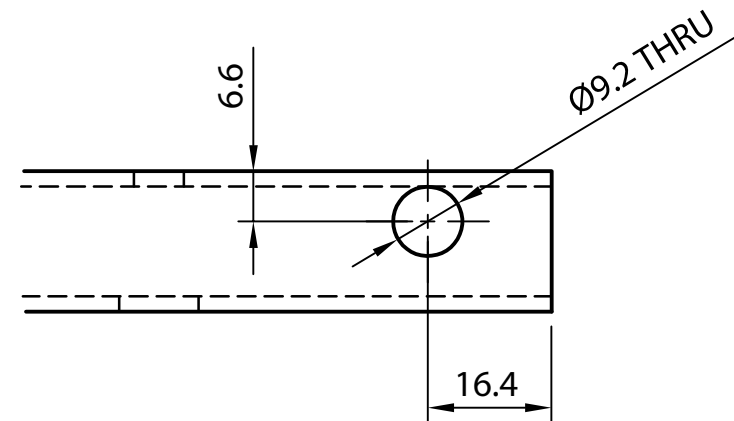
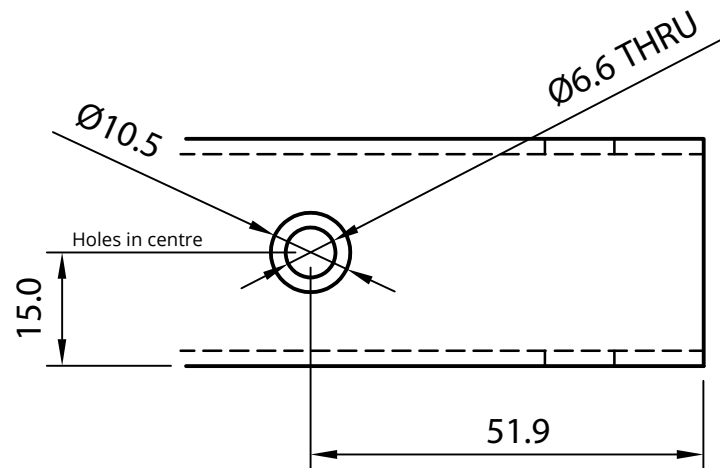
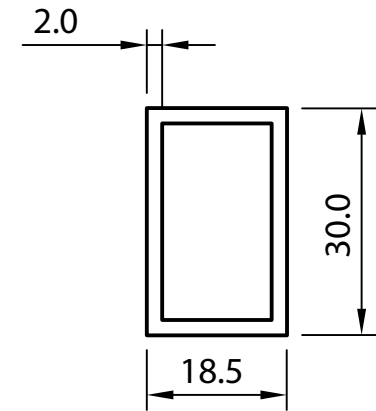
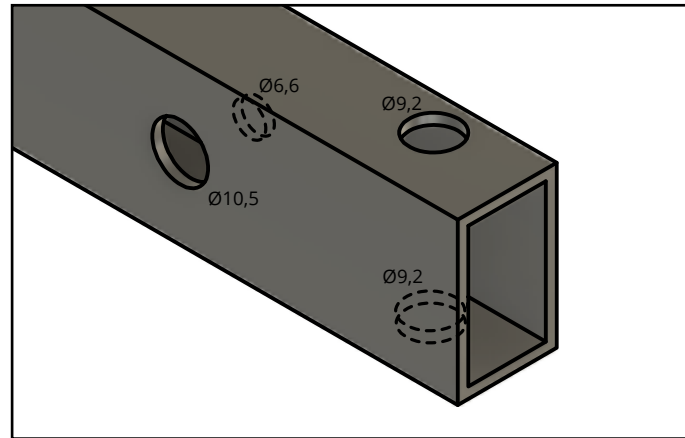


Step 2C - Crossbar Front

DRILL - MIRRIOR

Make sure to drill so that holes are on correct sides.

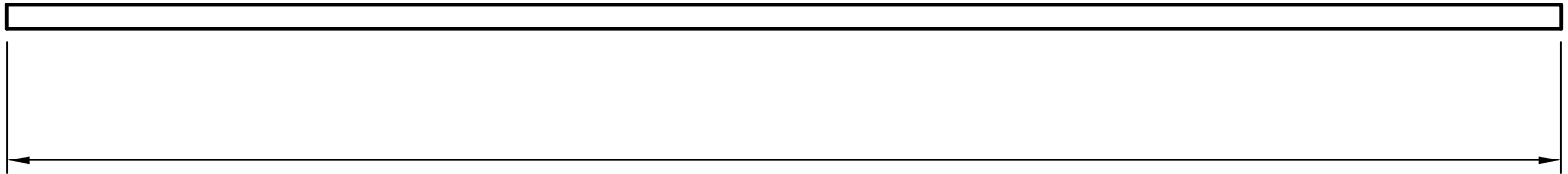
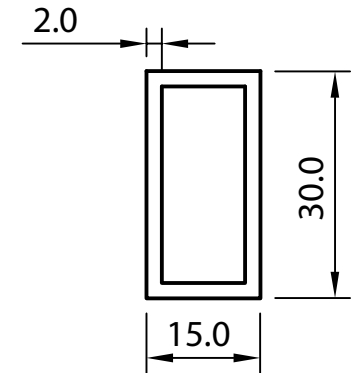
Deburr sharp edges



Step 3A - Crossbar Back

CUT

Deburr and break sharp cut edges and corners of the profile.



$FPD + 111.0$ mm

USE JIG

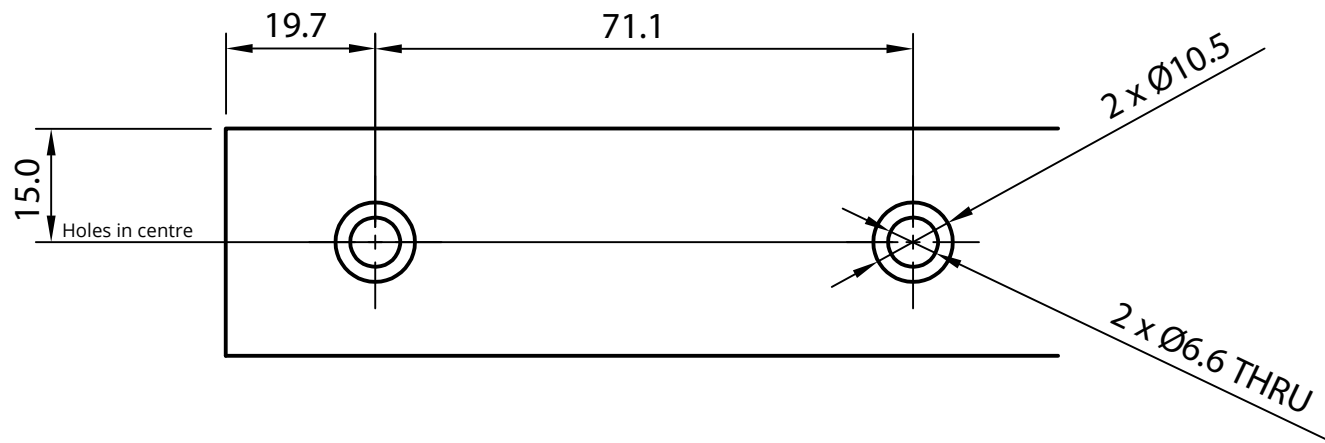
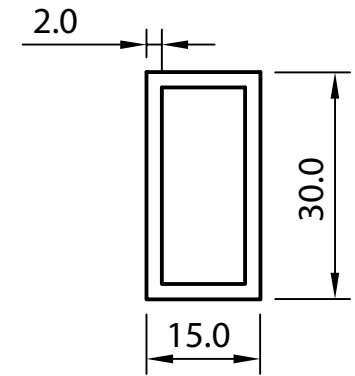
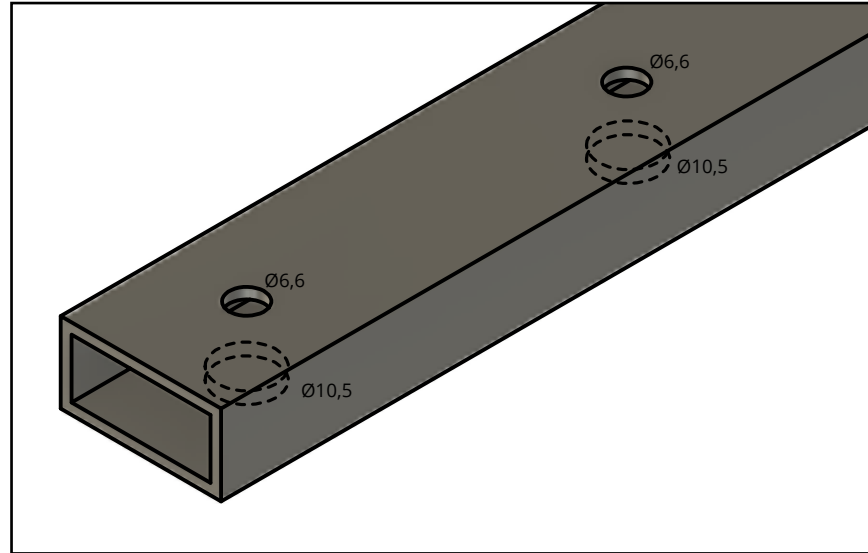
A description of how to make a cutting jig can be found at the end of this document

Step 3B - Crossbar Back

DRILL

Make sure to drill so that holes are on correct sides.

Deburr sharp edges

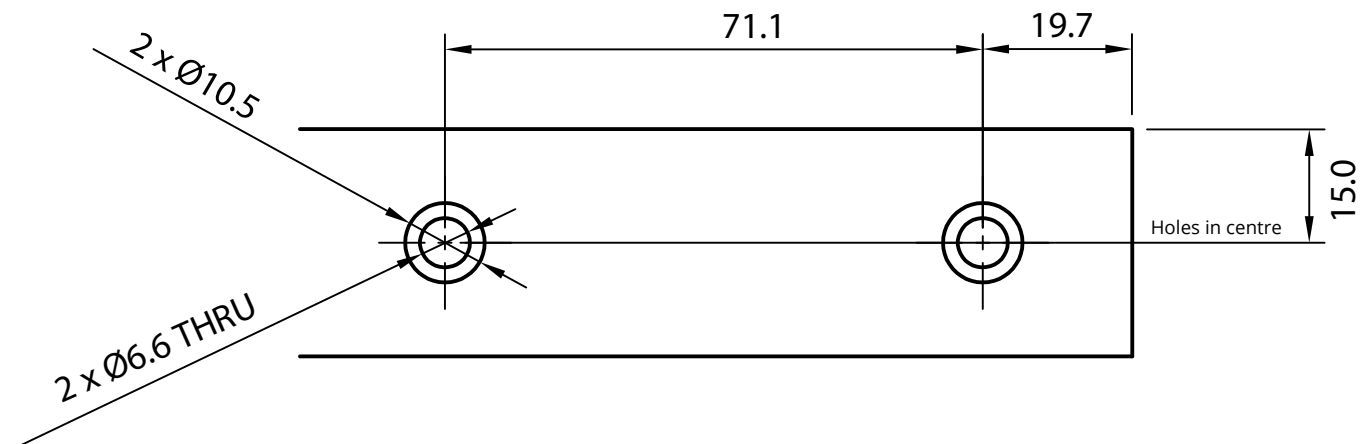
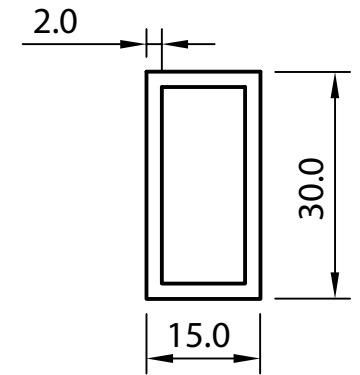
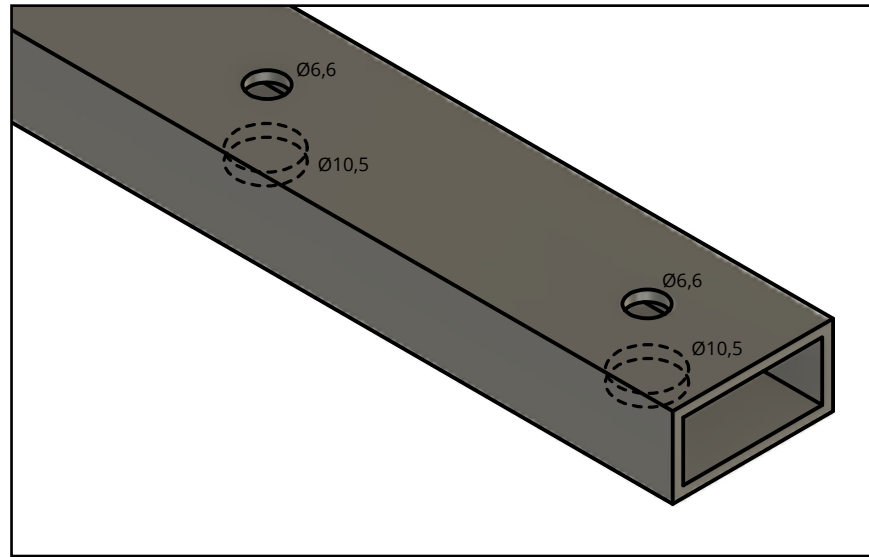


Step 3C - Crossbar Back

DRILL - MIRROR

Make sure to drill so that holes are on correct sides.

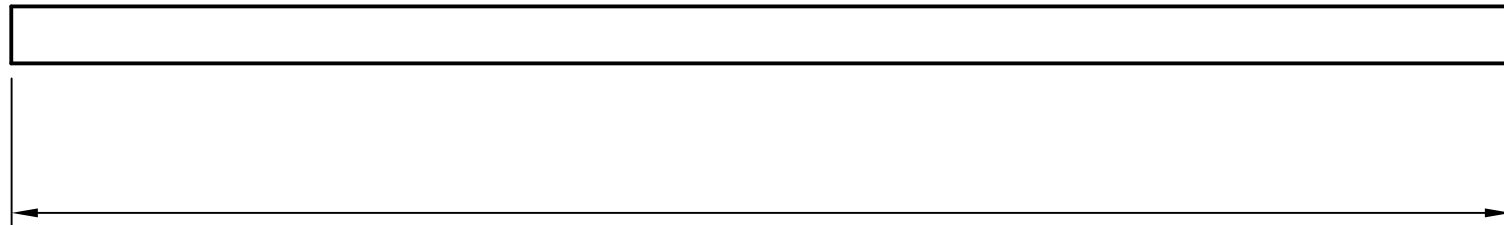
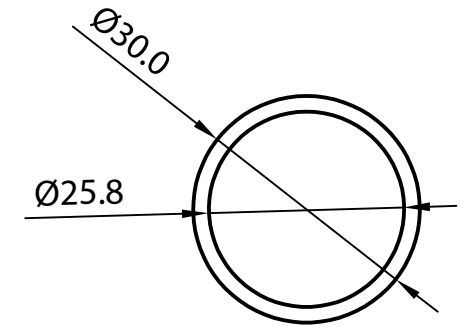
Deburr sharp edges.



Step 4A - Handle bar

CUT

Deburr and break sharp cut edges and corners of the profile.



FPD - 57,0 mm

USE JIG

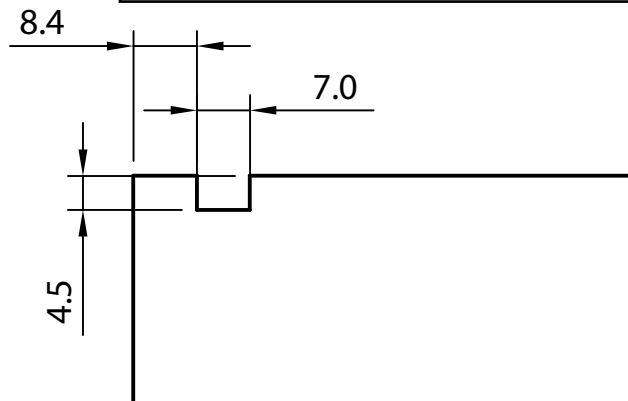
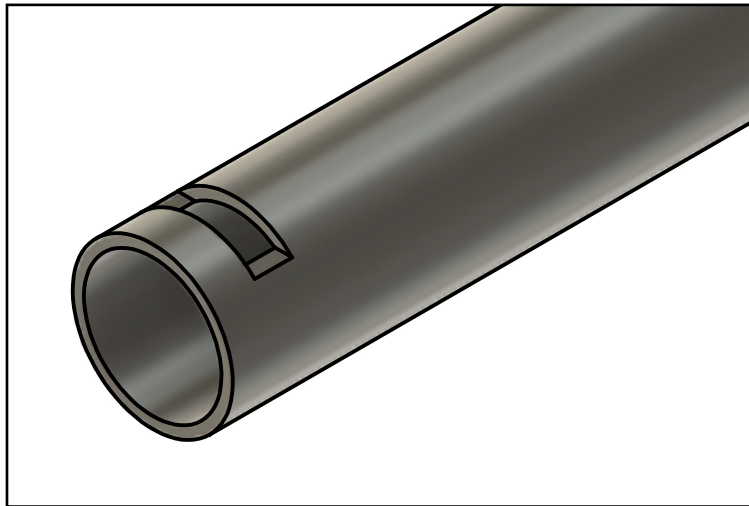
A description of how to make a cutting jig can be found at the end of this document

Step 4B - Handle bar

CUT SLOT

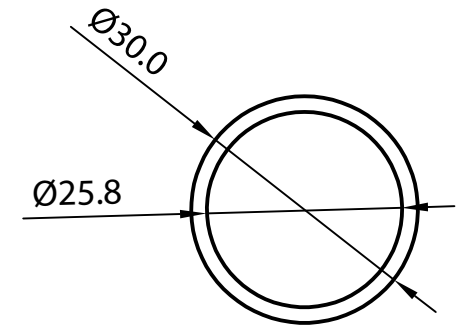
A good way to cut this slot is to use the depth stop on the saw.

Deburr sharp edges.



IMPORTANT

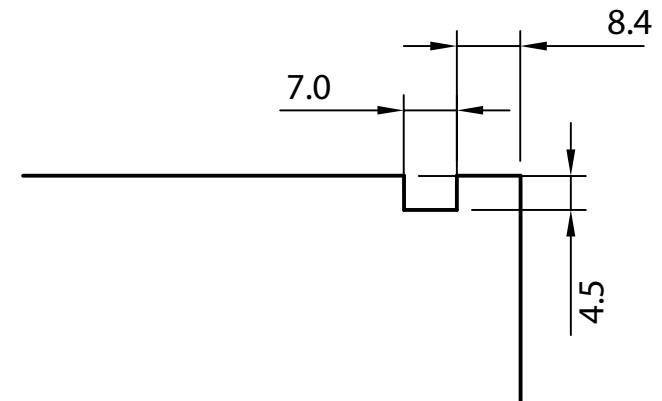
Slots must be aligned so that they point in the same direction.



Step 4C - Handle bar

CUT SLOT

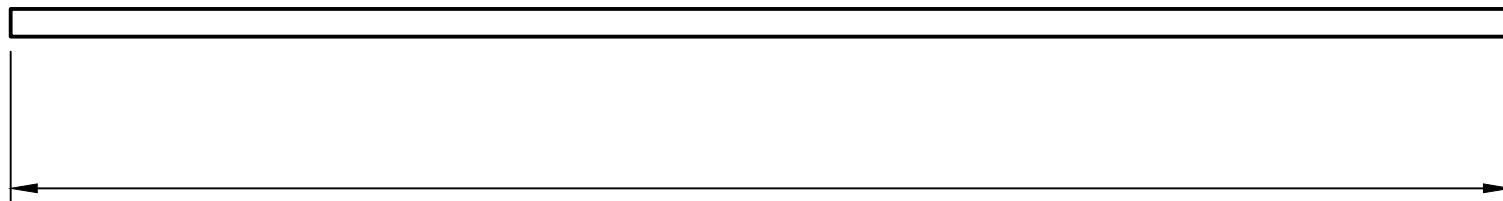
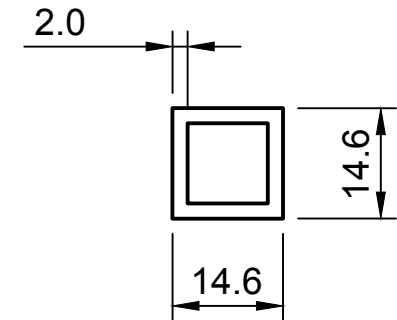
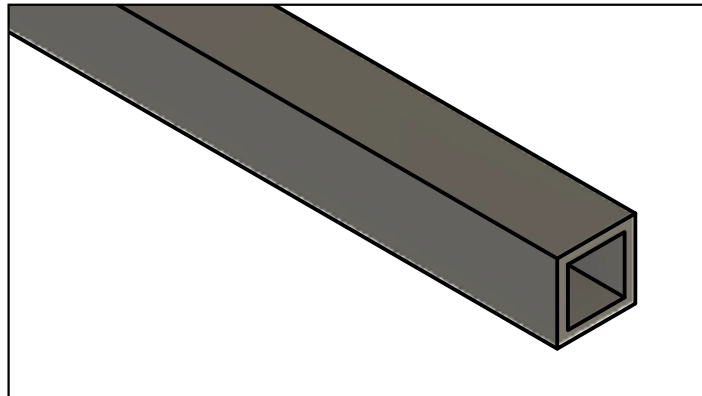
MIRROR



Step 5A - Rotating bar

CUT

Deburr and break sharp cut edges and corners of the profile.



FPD - 57,0 mm

USE JIG

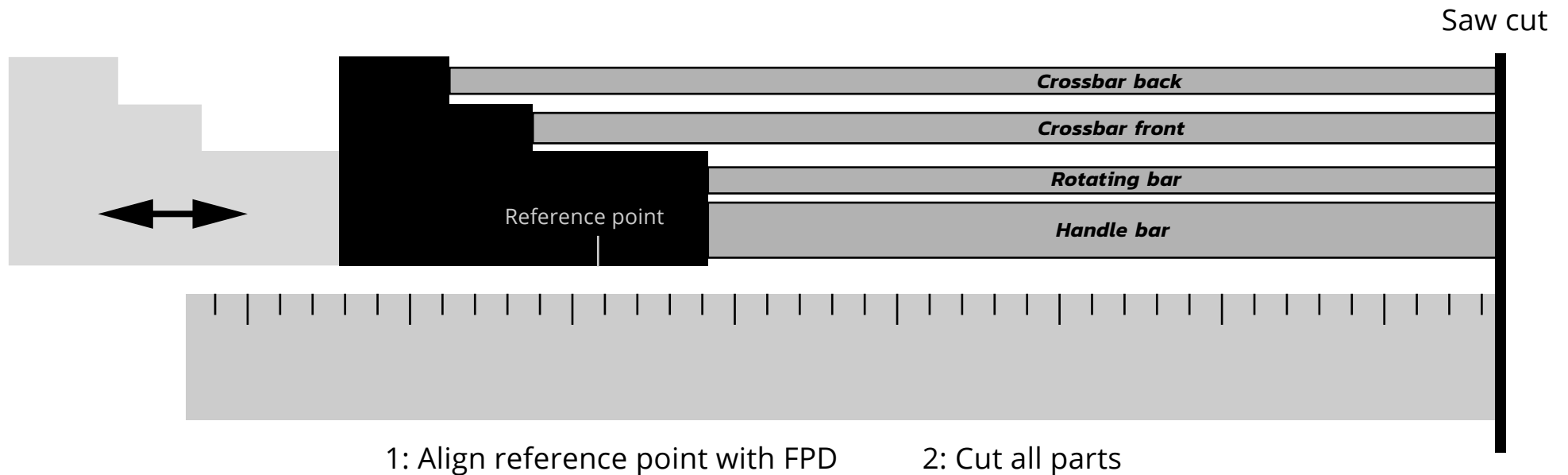
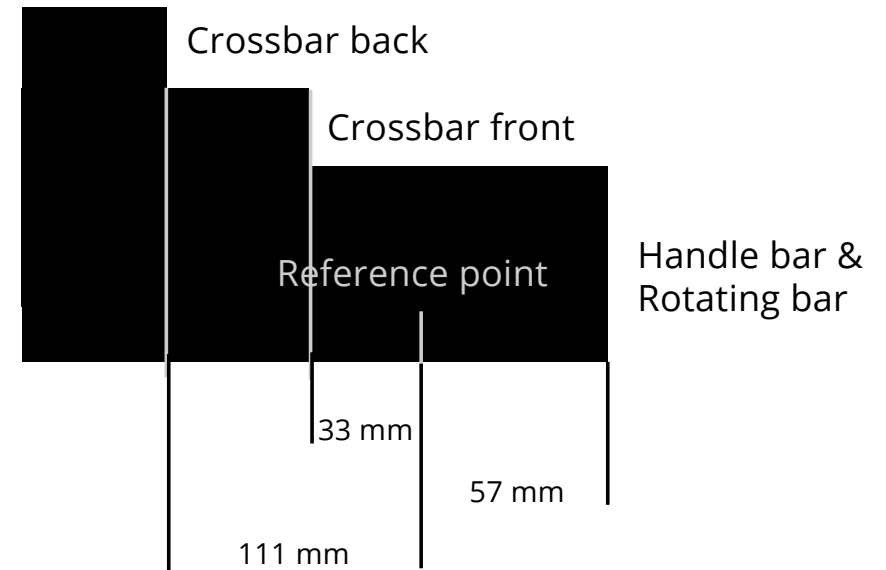
A description of how to make a cutting jig can be found at the end of this document

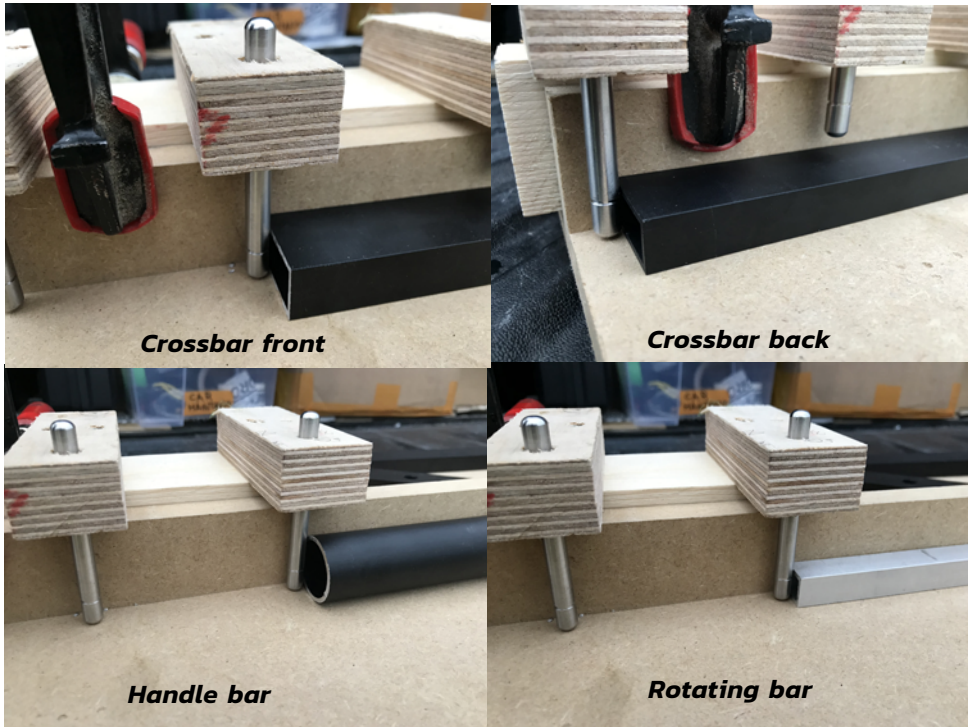
CUTTING JIG

The jig is a stop block with one reference point, and three steps.

With the jig you can set the stop block once, and cut all parts to perfect length.

Using the Dropracks standard «FPD» of 850mm parts makes it easier to make the jig.





Different profiles being pushed against different endstops



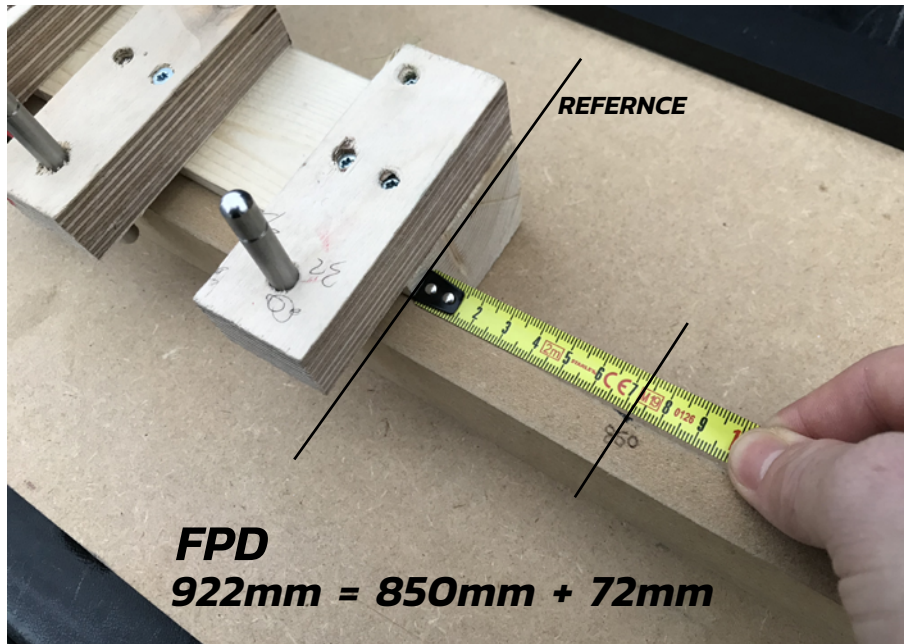
The cutting Jig.



Using the tailgate as a bench



Blade for cutting aluminium



Setting jig for measured fix point distance of 922mm (example)



Dropracks custom installation job on the road.

Marking guides for holes.